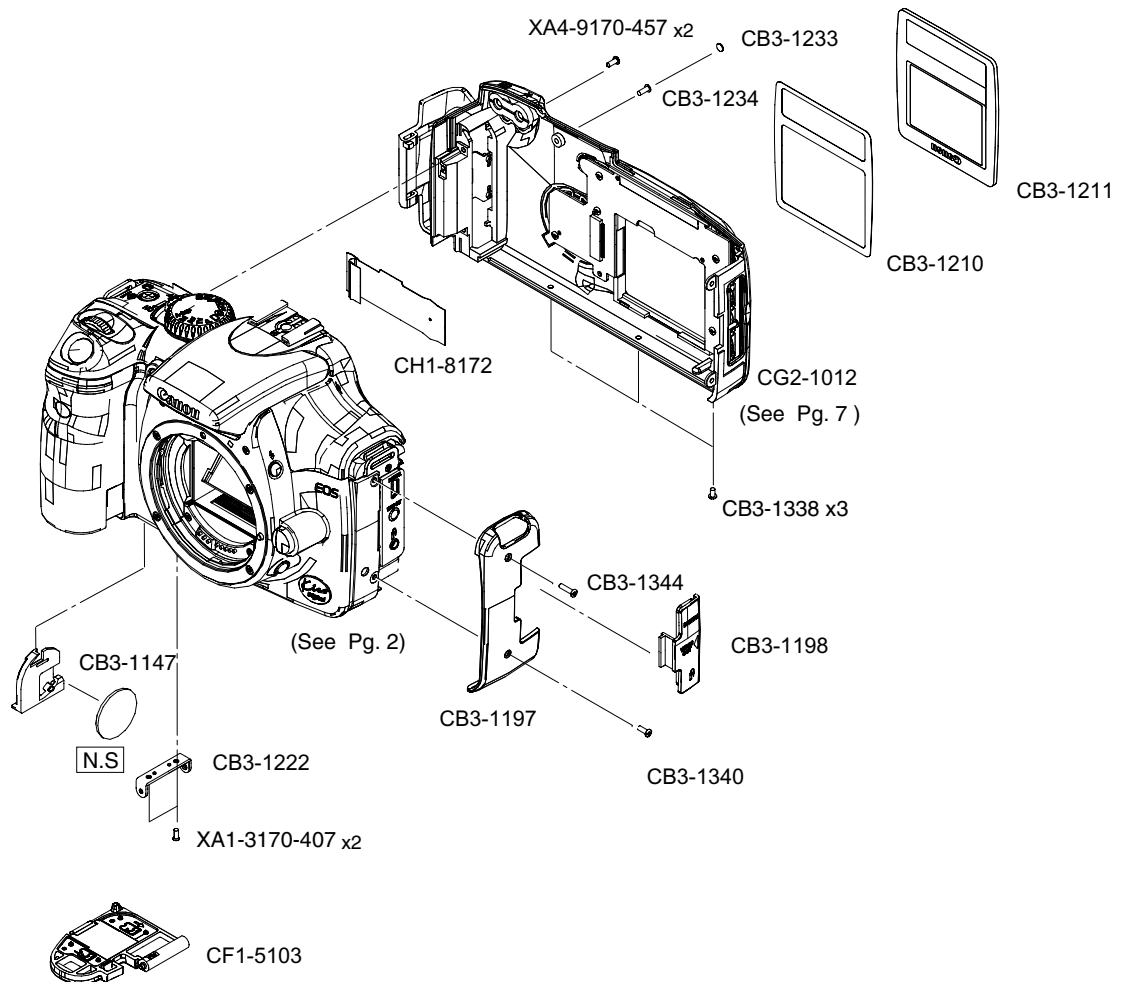




EOS KISS DIGITAL
EOS DIGITAL REBEL
EOS 300D DIGITAL

REF.NO. C12-6041
C12-6043
C12-6045

PARTS CATALOG

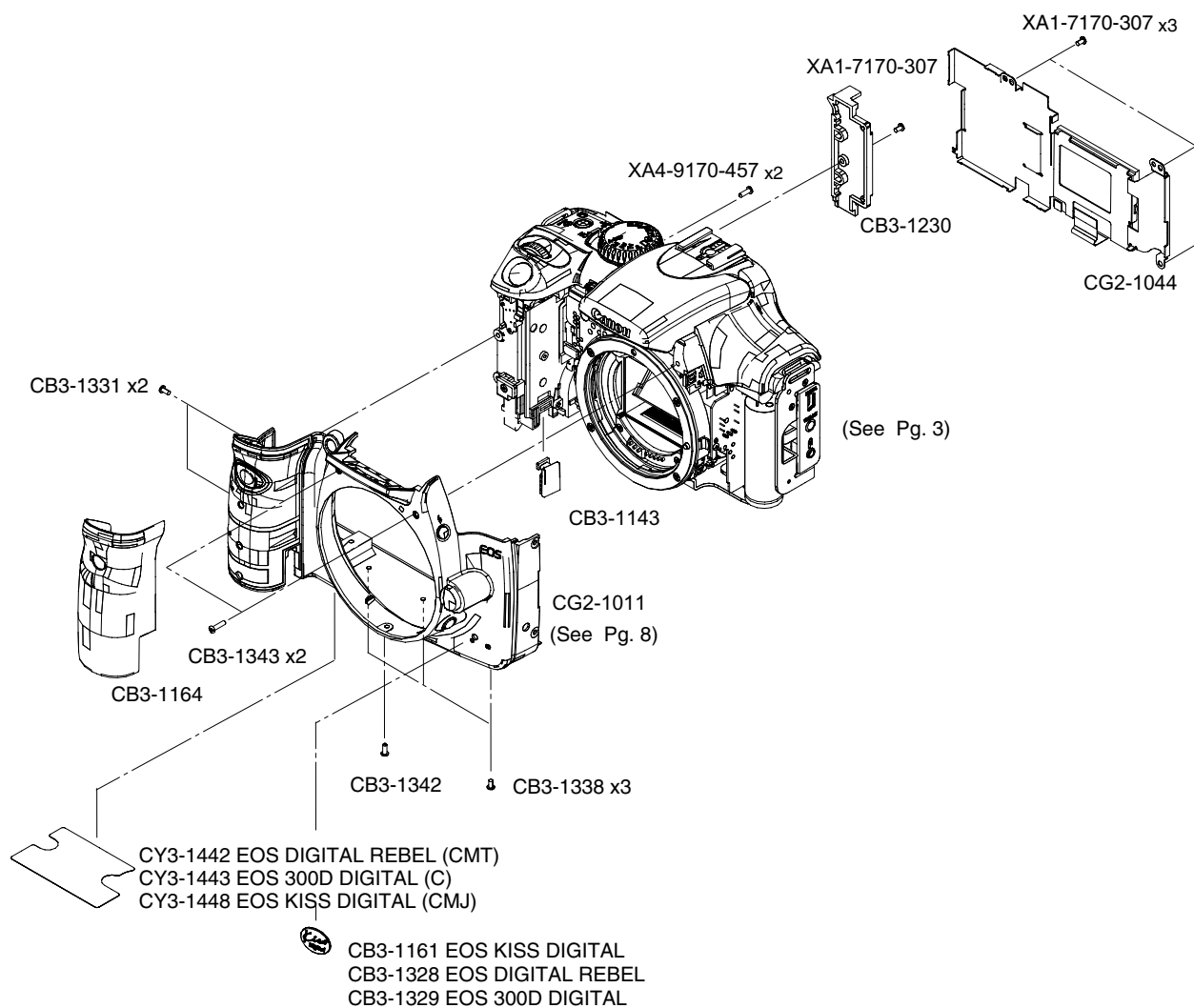
CANON DIGITAL CAMERA EOS KISS DIGITAL
EOS DIGITAL REBEL
EOS 300D DIGITAL

PARTS LIST

REF.NO. C12-6041, 3, 5

NEW	PARTS NO.	CLASS	QTY	DESCRIPTION
*	CB3-1147-000	C	1	CASE, BATTERY
*	CB3-1197-000	C	1	COVER, SIDE
*	CB3-1198-000	B	1	CAP, INTERFACE
*	CB3-1210-000	A	1	TAPE, TFT
*	CB3-1211-000	B	1	WINDOW, TFT
*	CB3-1222-000	C	1	PLATE, HINGE
*	CB3-1233-000	A	1	CAP, BLIND
*	CB3-1234-000	F	1	SCREW
*	CB3-1338-000	F	3	SCREW
*	CB3-1340-000	F	1	SCREW
*	CB3-1342-000	F	2	SCREW
*	CB3-1344-000	F	1	SCREW
*	CF1-5103-000	F	1	COVER ASS'Y, BATTERY
*	CG2-1012-000	F	1	COVER ASS'Y, BACK
*	CH1-8172-000	C	1	FPC, RELAY BK-D
	XA1-3170-407	F	2	SCREW
	XA4-9170-457	F	2	SCREW

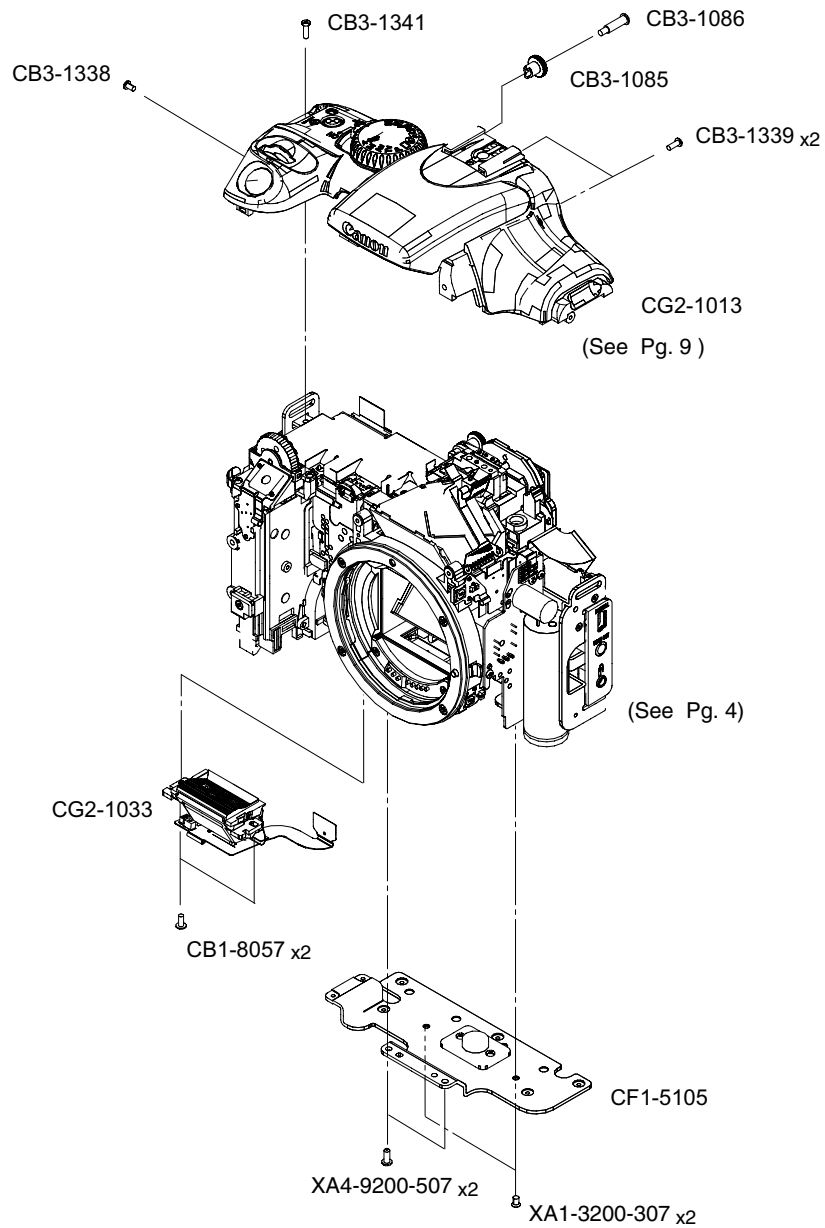
CANON DIGITAL CAMERA EOS KISS DIGITAL EOS DIGITAL REBEL EOS 300D DIGITAL



PARTS LIST

REF.NO. C12-6041, 3, 5

NEW	PARTS NO.	CLASS	QTY	DESCRIPTION
*	CB3-1143-000	C	1	COVER, CODE HOLE
*	CB3-1161-000	C	1	PLATE, MODEL NAME JPN
*	CB3-1164-000	C	1	COVER, GRIP
*	CB3-1230-000	N	1	PLATE, BASE CF
*	CB3-1328-000	C	1	PLATE, MODEL NAME USA
*	CB3-1329-000	C	1	PLATE, MODEL NAME EUR
*	CB3-1331-000	F	2	SCREW
*	CB3-1338-000	F	3	SCREW
*	CB3-1342-000	F	1	SCREW
*	CB3-1343-000	F	2	SCREW
*	CG2-1011-000	C	1	COVER ASS'Y, FRONT
*	CG2-1044-000	B	1	HOLDER ASS'Y, TFT
*	CY3-1442-000	C	1	LABEL, BODY NUMBER USA
*	CY3-1443-000	C	1	LABEL, BODY NUMBER EUR
*	CY3-1448-000	C	1	LABEL, BODY NUMBER JPN
	XA1-7170-307	F	4	SCREW
	XA4-9170-457	F	2	SCREW

CANON DIGITAL CAMERA EOS KISS DIGITAL
EOS DIGITAL REBEL
EOS 300D DIGITAL

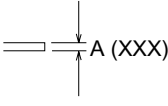
PARTS LIST

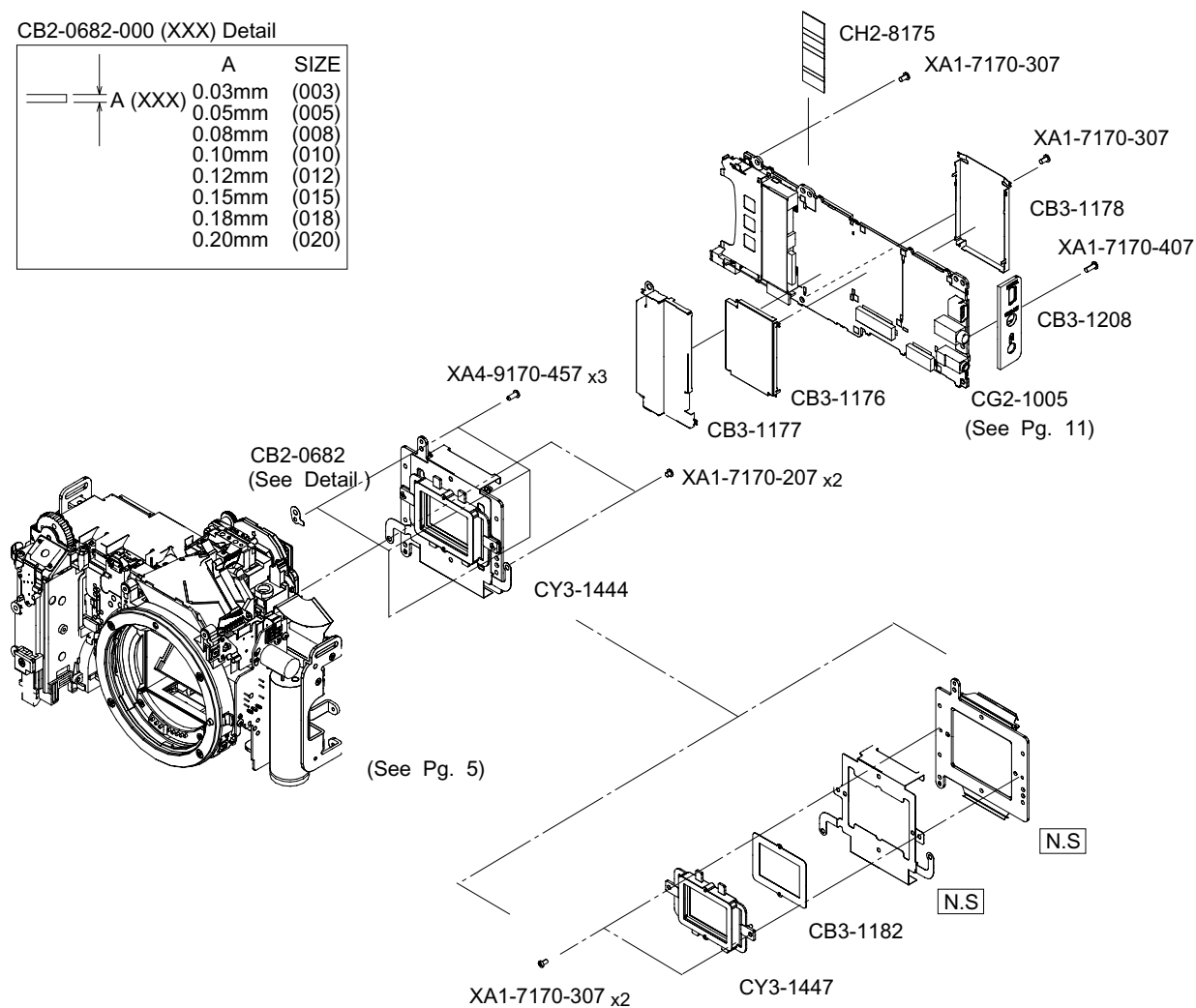
REF.NO. C12-6041, 3, 5

NEW	PARTS NO.	CLASS	QTY	DESCRIPTION
*	CB3-1085-000	C	1	DIAL, DIOPTER ADJUSTING
*	CB3-1086-000	F	1	SCREW
*	CB3-1338-000	F	1	SCREW
*	CB3-1339-000	F	2	SCREW
*	CB3-1341-000	F	1	SCREW
*	CF1-5105-000	C	1	PLATE ASS'Y, TRIPOD SOCKET
*	CG2-1013-000	B	1	COVER ASS'Y, TOP
*	CG2-1033-000	C	1	AUTO FOCUS UNIT
*	XA1-3200-307	F	2	SCREW
	CB1-8057-000	F	2	SCREW
	XA4-9200-507	F	2	SCREW

CANON DIGITAL CAMERA EOS KISS DIGITAL EOS DIGITAL REBEL EOS 300D DIGITAL

CB2-0682-000 (XXX) Detail

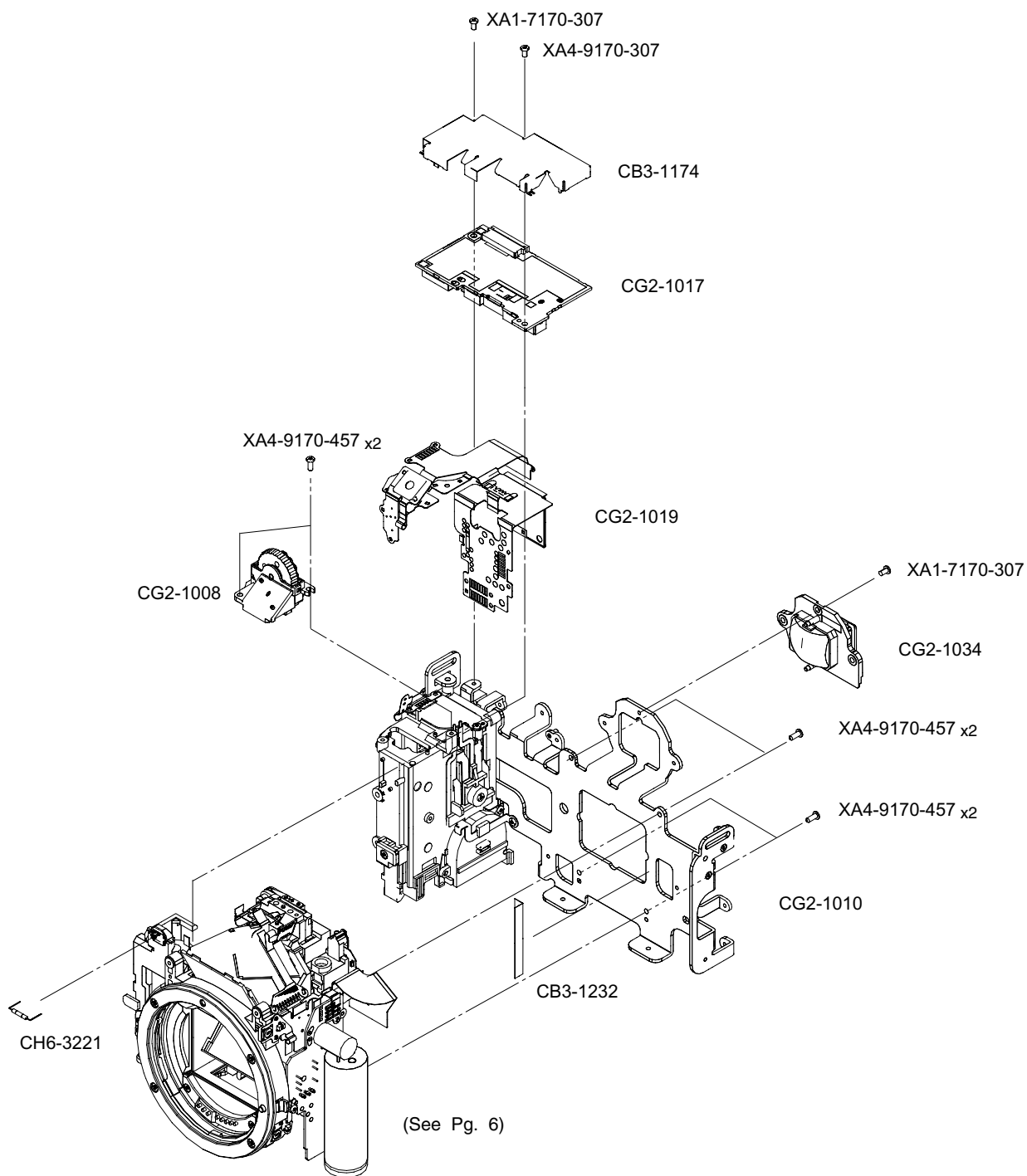
	A	SIZE
	0.03mm	(003)
	0.05mm	(005)
	0.08mm	(008)
	0.10mm	(010)
	0.12mm	(012)
	0.15mm	(015)
	0.18mm	(018)
	0.20mm	(020)



PARTS LIST

REF.NO. C12-6041, 3, 5

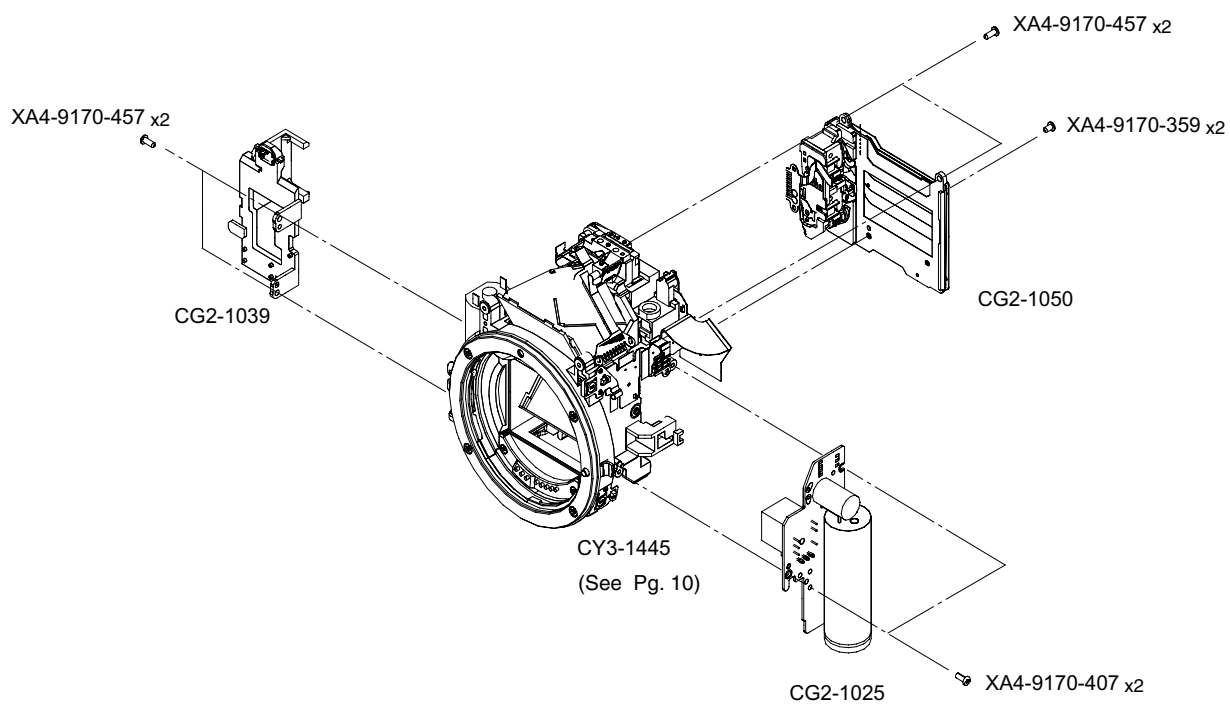
NEW	PARTS NO.	CLASS	QTY	DESCRIPTION
*	CB3-1176-000	N	1	CASE, MAIN PCB SHIELD 1
*	CB3-1177-000	N	1	CASE, MAIN PCB SHIELD 2
*	CB3-1178-000	N	1	CASE, MAIN PCB SHIELD
*	CB3-1182-000	C	1	TAPE, LOW PASS FILTER DOUBLE SIDED
*	CB3-1208-000	C	1	COVER, INTERFACE
*	CG2-1005-000	B	1	PCB ASS'Y, MAIN
*	CH2-8175-000	C	1	FPC, RELAY DC-MAIN
*	CY3-1444-000	B	1	SENSOR ASS'Y, CMOS
*	CY3-1447-000	B	2	FILTER ASS'Y, LOW PASS
	CB2-0682-000	C	3	WASHER, FB ADJ.
	XA1-7170-207	F	2	SCREW
	XA1-7170-307	F	4	SCREW
	XA1-7170-407	F	1	SCREW
	XA4-9170-457	F	3	SCREW

CANON DIGITAL CAMERA EOS KISS DIGITAL
EOS DIGITAL REBEL
EOS 300D DIGITAL

P A R T S L I S T

REF.NO. C12-6041, 3, 5

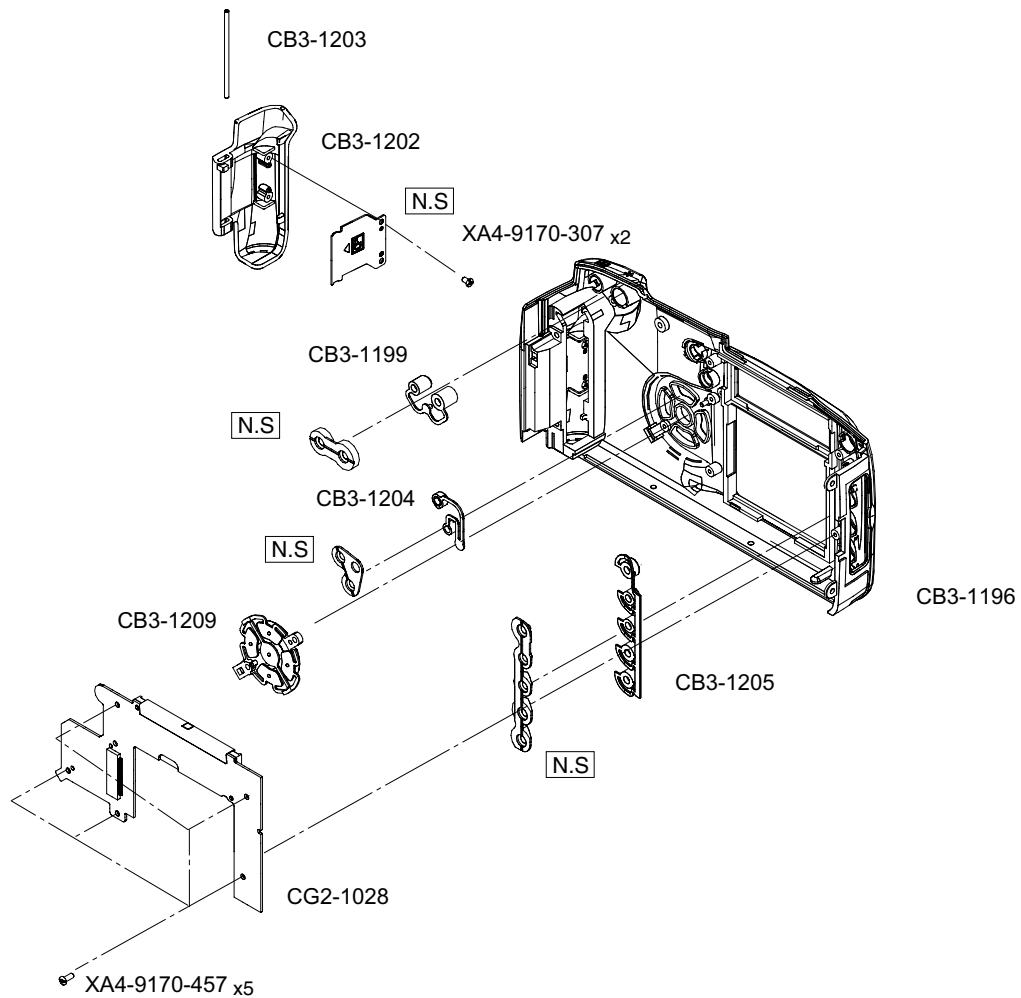
NEW	PARTS NO.	CLASS	QTY	DESCRIPTION
*	CB3-1174-000	N	1	CASE, DC/DC PCB SHIELD
*	CB3-1232-000			SHEET, LIGHT SHIELD
*	CG2-1008-000	C	1	DIAL ASS'Y, MAIN
*	CG2-1010-000	C	1	PLATE ASS'Y, MAIN BASE
*	CG2-1017-000	B	1	PCB ASS'Y, DC/DC
*	CG2-1019-000	B	1	FPC ASS'Y, MOTOR DRIVE
*	CG2-1034-000	C	1	COVER ASS'Y, EYEPiece
*	CH6-3221-000	E	1	LAMP, SELF TIMER
	XA1-7170-307	F	2	SCREW
	XA4-9170-307	F	1	SCREW
	XA4-9170-457	F	6	SCREW

CANON DIGITAL CAMERA EOS KISS DIGITAL
EOS DIGITAL REBEL
EOS 300D DIGITAL

PARTS LIST

REF.NO. C12-6041, 3, 5

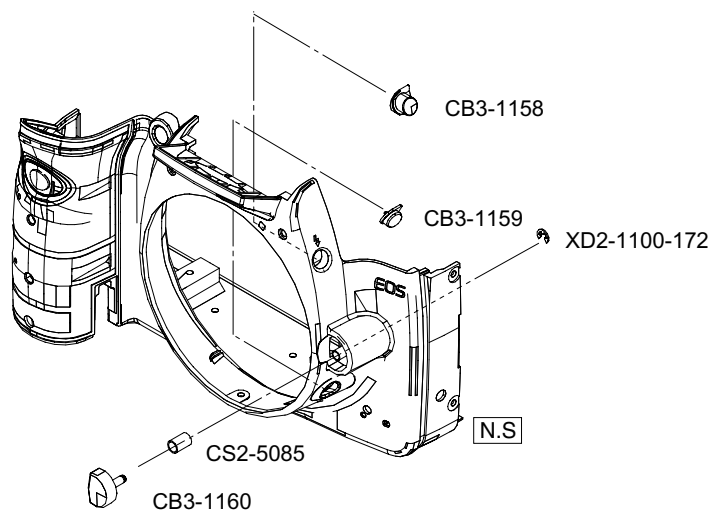
NEW	PARTS NO.	CLASS	QTY	DESCRIPTION
*	CG2-1025-000	C	1	PCB ASS'Y, FLASH
*	CG2-1039-000	C	1	BASE ASS'Y, WING
*	CG2-1050-000	A	1	SHUTTER UNIT
*	CY3-1445-000	C	1	BOX ASS'Y, MIRROR
	XA4-9170-359	F	2	SCREW
	XA4-9170-407	F	2	SCREW
	XA4-9170-457	F	4	SCREW

CANON DIGITAL CAMERA EOS KISS DIGITAL
EOS DIGITAL REBEL
EOS 300D DIGITAL

PARTS LIST

REF.NO. C12-6041, 3, 5

NEW	PARTS NO.	CLASS	QTY	DESCRIPTION
*	CB3-1196-000	N	1	COVER, BACK
*	CB3-1199-000	C	1	BUTTON, AE/AF SELECT
*	CB3-1202-000	N	1	COVER, CF
*	CB3-1203-000	N	1	SHAFT, CF COVER
*	CB3-1204-000	C	1	BUTTON, AV/LAMP
*	CB3-1205-000	C	1	BUTTON, MENU
*	CB3-1209-000	C	1	BUTTON, SET
*	CG2-1028-000	C	1	PCB ASS'Y, BACK LCD
	XA4-9170-307	F	2	SCREW
	XA4-9170-457	F	4	SCREW

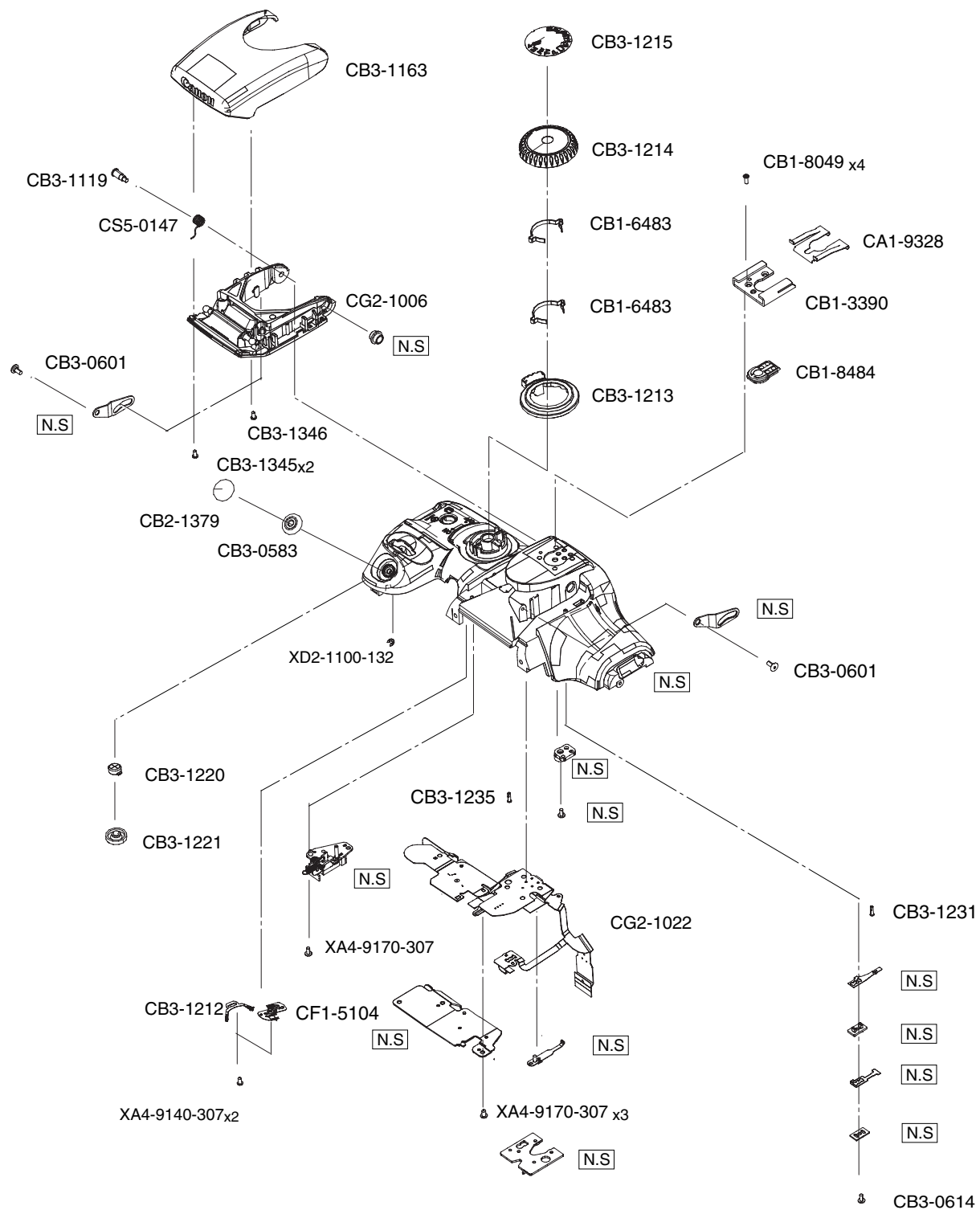
CANON DIGITAL CAMERA EOS KISS DIGITAL
EOS DIGITAL REBEL
EOS 300D DIGITAL

PARTS LIST

REF.NO. C12-6041, 3, 5

NEW	PARTS NO.	CLASS	QTY	DESCRIPTION
*	CB3-1158-000	N	1	BUTTON, FLASH
*	CB3-1159-000	N	1	BUTTON, DEPTH OF FIELD PREVIEW
*	CB3-1160-000	N	1	BUTTON, LENS RELEASE
	CS2-5085-000	D	1	SPRING, COIL
	XD2-1100-172	F	1	RETAINING RING (E-TYPE), M1.7

CANON DIGITAL CAMERA EOS KISS DIGITAL
EOS DIGITAL REBEL
EOS 300D DIGITAL

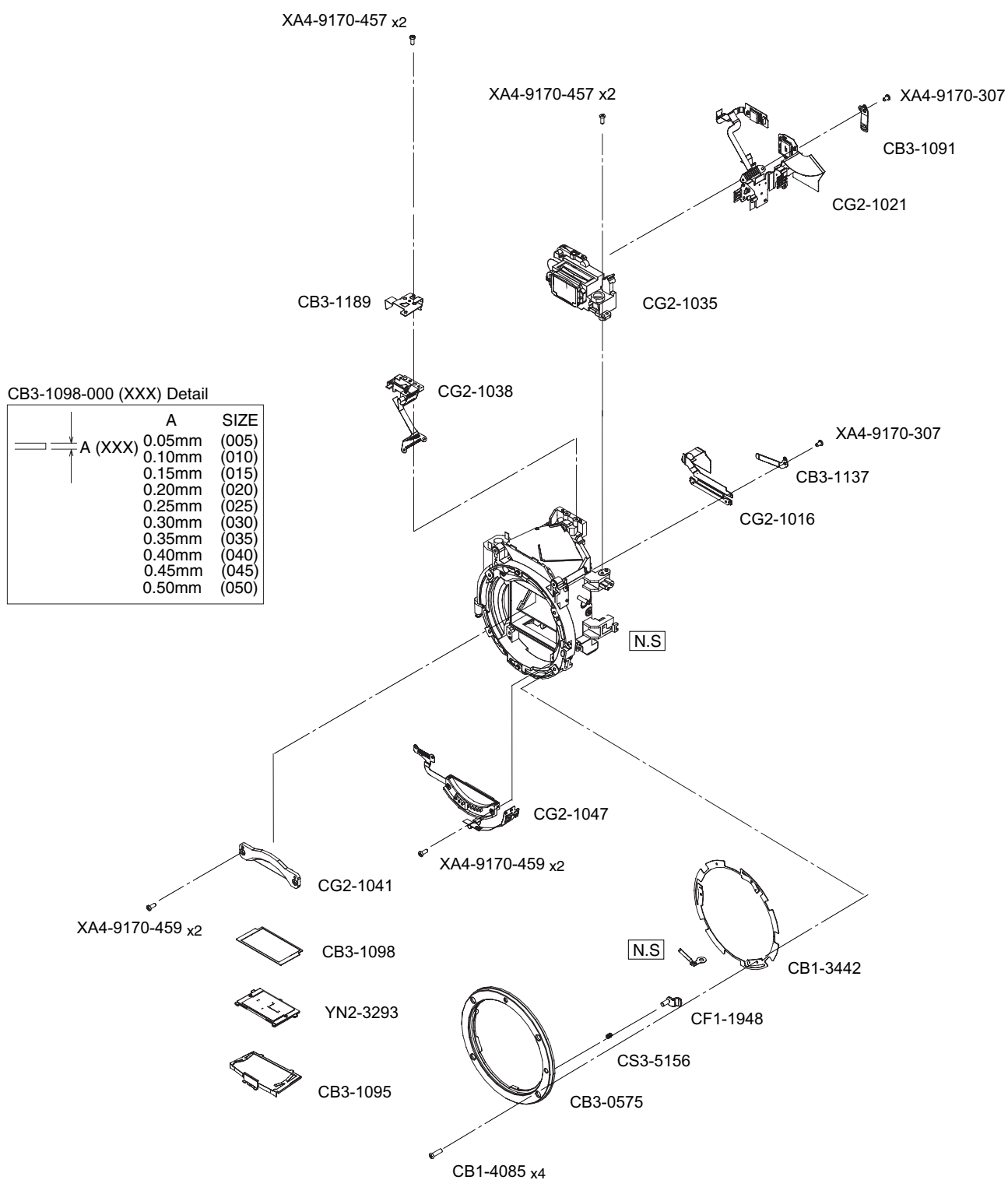


PARTS LIST

REF.NO. C12-6041, 3, 5

NEW	PARTS NO.	CLASS	QTY	DESCRIPTION
*	CB3-0614-000	F	1	SCREW
*	CB3-1119-000	F	1	SCREW
*	CB3-1163-000	C	1	COVER, FLASH
*	CB3-1212-000	C	1	CONTACT, MAIN SWITCH
*	CB3-1213-000	C	1	LEVER, MAIN SWITCH
*	CB3-1214-000	C	1	DIAL, MODE
*	CB3-1215-000	C	1	PLATE, MODE DIAL
*	CB3-1220-000	C	1	BUTTON, SELF/DRIVE
*	CB3-1221-000	C	1	SWITCH, SELF/DRIVE RUBBER
*	CB3-1225-000	C	1	PIN, ACCESSORY SHOE
*	CB3-1231-000	N	1	PIN, FLASH POP UP
*	CB3-1345-000	F	2	SCREW
*	CB3-1346-000	F	1	SCREW
*	CF1-5104-000	C	1	CONTACT, MODE DIAL
*	CG2-1006-000	C	1	CASE ASS'Y, FLASH
*	CG2-1022-000	C	1	FPC ASS'Y, TOP
*	CS5-0147-000	F	1	SPRING, FLASH POP UP
	CA1-9328-000	C	1	SPRING, PLATE (BL)
	CB1-3390-000	D	1	SHOE ACCESSORY
	CB1-6483-000	E	2	CLICK SPRING, MODE DIAL
	CB1-8049-000	F	4	SCREW
	CB1-8484-000	E	1	BASE, ACC. SHOE
	CB2-1379-000	C	1	CAP, RELEASE BUTTON
	CB3-0583-000	C	1	BUTTON, RELEASE
	CB3-0601-000	F	2	SCREW
	XA4-9140-307	F	2	SCREW
	XA4-9170-307	F	3	SCREW
	XA4-9170-457	F	4	SCREW
	XD2-1100-132	F	1	

CANON DIGITAL CAMERA EOS KISS DIGITAL EOS DIGITAL REBEL EOS 300D DIGITAL



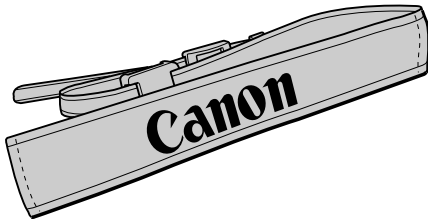
PARTS LIST

REF.NO. C12-6041, 3, 5

NEW	PARTS NO.	CLASS	QTY	DESCRIPTION
*	CB3-1091-000	N	1	PLATE, SENSOR FPC
*	CB3-1095-000	C	1	HOLDER, FOCUSING SCREEN
*	CB3-1098-000(XXX)	C	1	PLATE, FINDER FOCUS ADJUSTING
*	CB3-1189-000	N	1	PLATE, SUPER IMPOSE SENSOR COVER
*	CG2-1016-000	C	1	LCD ASS'Y, INSIDE
*	CG2-1021-000	B	1	FPC, AE SENSOR
*	CG2-1035-000	B	1	EYEPiece ASS'Y
*	CG2-1038-000	C	1	SENSOR ASS'Y, SUPER IMPOSE
*	CG2-1041-000	C	1	PLATE ASS'Y, LIGHT SHIELD
*	CG2-1047-000	C	1	BASE ASS'Y, CONTACT
*	YN2-3293-000	B	1	PLATE, FOCUSING SCREEN
	CB1-3442-000	C	1	SPRING, BODY MOUNT
	CB1-4085-000	F	4	SCREW
	CB3-0575-000	C	1	MOUNT, CAMERA BODY
	CB3-1137-000	N	1	PLATE, INSIDE LCD COVER
	CF1-1948-000	C	1	LEVER ASS'Y, LENS LOCK
	CS3-5156-000	C	1	SPRING, LOCK PIN
	XA4-9170-307	F	2	SCREW
	XA4-9170-457	F	4	SCREW
	XA4-9170-459	F	4	SCREW

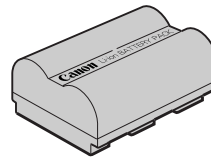
Accessories

**Neck Strap EW-100DB II
(with eyepiece cover)**



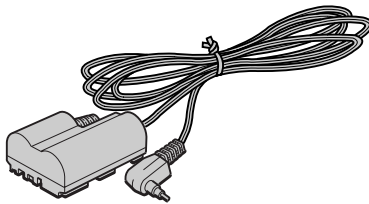
N.S (Product Available)

**Battery Pack BP-511
BP-512**



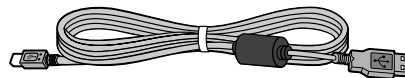
N.S (Product Available)

DC Coupler DR-400



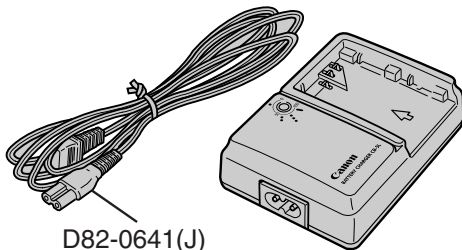
N.S (Product Available)

**Interface Cable
IFC-300 PCU(USB)**



N.S (Product Available)

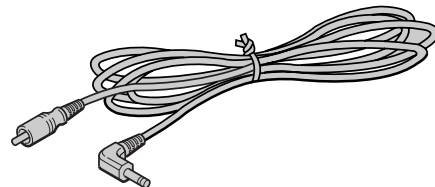
Battery Charger CB-5L



D82-0641(J)
C50-8091(U)
D82-0643(E)
D82-0644(UK)
D82-0645(A)

N.S (Product Available)

Video Cable VC-100



FH6-3922

BATTERY CHARGER CB-5L

REF.NO.D85-1111

NEW	PARTS NO.	CLASS	QTY	DESCRIPTION
	D82-0641-000	C	1	CABLE, AC(J)
	C50-8091-000	C	1	CABLE, AC(U)
	D82-0643-000	C	1	CABLE, AC(E)
	D82-0644-000	C	1	CABLE, AC(UK)
	D82-0645-000	C	1	CABLE, AC(A)

VIDEO CABLE VC-100

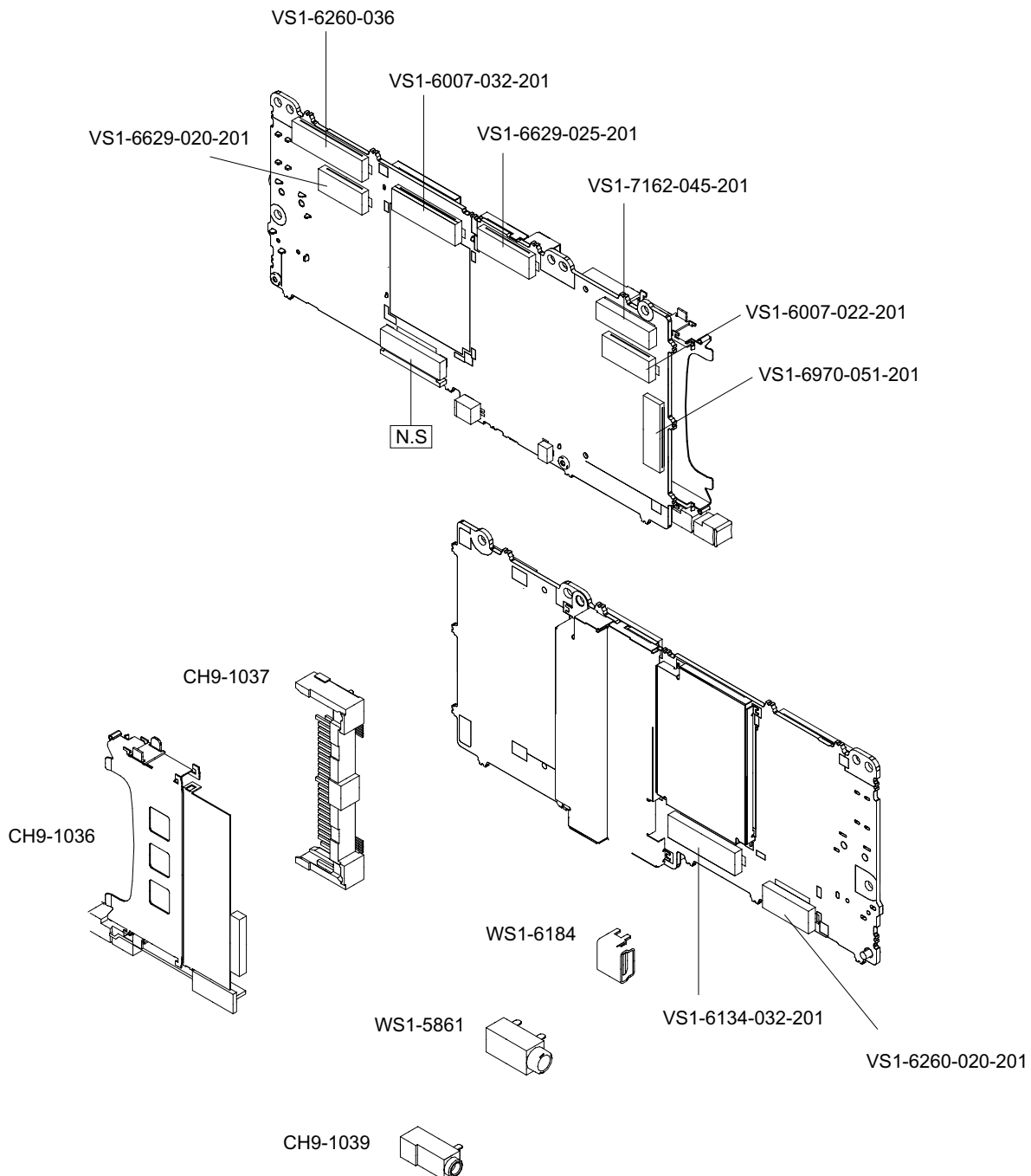
REF.NO.FH6-3922

NEW	PARTS NO.	CLASS	QTY	DESCRIPTION
	FH6-3922-000	C	1	VIDEO CABLE VC-100

ELECTRIC PARTS LIST

REF.NO.FH6-3922

NEW	PARTS NO.	CLASS	QTY	DESCRIPTION
*	VS1-6007-022 201	N	1	CONNECTOR, DCD-FFC
*	VS1-6007-032 201	N	1	CONNECTOR, IMG-TOP
*	VS1-6134-032 201	N	1	CONNECTOR, IMG-BTM
*	VS1-6260-020 201	N	1	CONNECTOR, AF-FPC
*	VS1-6260-036 201	N	1	CONNECTOR, SENS-FPC
*	VS1-6629-020 201	N	1	CONNECTOR, TOP-FPC
*	VS1-6629-025 201	N	1	CONNECTOR, ILC-FPC
*	VS1-6970-051 201	N	1	CONNECTOR, BD-FFC
*	VS1-7162-045 201	N	1	CONNECTOR, MDR-FPC
*	WS1-5861-000 000	N	1	SOCKET ASS'Y, VIDEO OUT PORT
*	WS1-6184-000 000	N	1	SOCKET ASS'Y, USB PORT
	Y11-3901-000	F	1	WIRE, LEAD
	Y11-3902-000	F	1	WIRE, LEAD
	Y11-3903-000	F	1	WIRE, LEAD
	Y11-3907-000	F	1	WIRE, LEAD
	Y11-3909-000	F	1	WIRE, LEAD
	Y11-3911-000	F	1	WIRE, LEAD
	Y11-4401-000	F	1	WIRE, LEAD
	Y11-4402-000	F	1	WIRE, LEAD
	Y11-4403-000	F	1	WIRE, LEAD
	Y11-4411-000	F	1	WIRE, LEAD
	Y11-5002-000	F	1	WIRE, LEAD
	Y11-5003-000	F	1	WIRE, LEAD
*	CH2-8176-000	F	1	WIRE, LEAD
*	CH2-8177-000	F	1	WIRE, LEAD

CANON DIGITAL CAMERA EOS KISS DIGITAL
EOS DIGITAL REBEL
EOS 300D DIGITAL

INDEX OF PARTS LIST

REF.NO. C12-6041, 3, 5

NEW	PARTS No.	Page	NEW	PARTS No.	Page
	CA1-9328-000	9	*	CB3-1205-000	7
	CB1-3390-000	9	*	CB3-1208-000	4
	CB1-3442-000	10	*	CB3-1209-000	7
	CB1-4085-000	10	*	CB3-1210-000	1
	CB1-6483-000	9	*	CB3-1211-000	1
	CB1-8049-000	9	*	CB3-1212-000	9
	CB1-8057-000	3	*	CB3-1213-000	9
	CB1-8484-000	9	*	CB3-1214-000	9
	CB2-0682-000	4	*	CB3-1215-000	9
	CB2-1379-000	9	*	CB3-1220-000	9
	CB3-0575-000	10	*	CB3-1221-000	9
	CB3-0583-000	9	*	CB3-1222-000	1
	CB3-0601-000	9	*	CB3-1230-000	2
*	CB3-0614-000	9	*	CB3-1231-000	9
*	CB3-1085-000	3	*	CB3-1232-000	5
*	CB3-1086-000	3	*	CB3-1233-000	1
*	CB3-1091-000	10	*	CB3-1234-000	1
*	CB3-1095-000	10	*	CB3-1235-000	9
*	CB3-1098-000(XXX)	10	*	CB3-1328-000	2
*	CB3-1119-000	9	*	CB3-1329-000	2
	CB3-1137-000	10	*	CB3-1331-000	2
*	CB3-1143-000	2	*	CB3-1338-000	1, 2, 3
*	CB3-1147-000	1	*	CB3-1339-000	3
*	CB3-1158-000	8	*	CB3-1340-000	1
*	CB3-1159-000	8	*	CB3-1341-000	3
*	CB3-1160-000	8	*	CB3-1342-000	1, 2
*	CB3-1161-000	2	*	CB3-1343-000	2
*	CB3-1163-000	9	*	CB3-1344-000	1
*	CB3-1164-000	2	*	CB3-1345-000	9
*	CB3-1174-000	5	*	CB3-1346-000	9
*	CB3-1178-000	4		CF1-1948-000	10
*	CB3-1182-000	4	*	CF1-5103-000	1
*	CB3-1189-000	10	*	CF1-5104-000	9
*	CB3-1196-000	7	*	CF1-5105-000	3
*	CB3-1197-000	1	*	CG2-1005-000	4
*	CB3-1198-000	1	*	CG2-1006-000	9
*	CB3-1199-000	7	*	CG2-1008-000	5
*	CB3-1202-000	7	*	CG2-1010-000	5
*	CB3-1203-000	7	*	CG2-1011-000	2
*	CB3-1204-000	7	*	CG2-1012-000	1

INDEX OF PARTS LIST

REF.NO. C12-6041, 3, 5

NEW	PARTS No.	Page
*	CG2-1013-000	3
*	CG2-1016-000	10
*	CG2-1017-000	5
*	CG2-1019-000	5
*	CG2-1021-000	10
*	CG2-1022-000	9
*	CG2-1025-000	6
*	CG2-1028-000	7
*	CG2-1033-000	3
*	CG2-1034-000	5
*	CG2-1035-000	10
*	CG2-1038-000	10
*	CG2-1039-000	6
*	CG2-1041-000	10
*	CG2-1044-000	2
*	CG2-1047-000	10
*	CG2-1050-000	6
*	CH1-8172-000	1
*	CH2-8175-000	4
*	CH6-3221-000	5
	CS2-5085-000	8
	CS3-5156-000	10
*	CS5-0147-000	9
*	CY3-1442-000	2
*	CY3-1443-000	2
*	CY3-1444-000	4
*	CY3-1445-000	6
*	CY3-1447-000	4
*	CY3-1448-000	2
	XA1-3170-407	1
*	XA1-3200-307	3
	XA1-7170-207	4
	XA1-7170-307	2, 4, 5
	XA1-7170-407	4
	XA4-9140-307	9
	XA4-9170-307	5, 7, 9, 10
	XA4-9170-359	6
	XA4-9170-407	6
	XA4-9170-457	1, 2, 4, 5, 6, 7, 9, 10
	XA4-9170-459	10

NEW	PARTS No.	Page
	XA4-9200-507	3
	XD2-1100-132	9
	XD2-1100-172	8
*	YN2-3293-000	10

Circuit Diagrams

Trademarks

The product names and company names described in this CD-ROM are the registered trademarks of the individual companies.

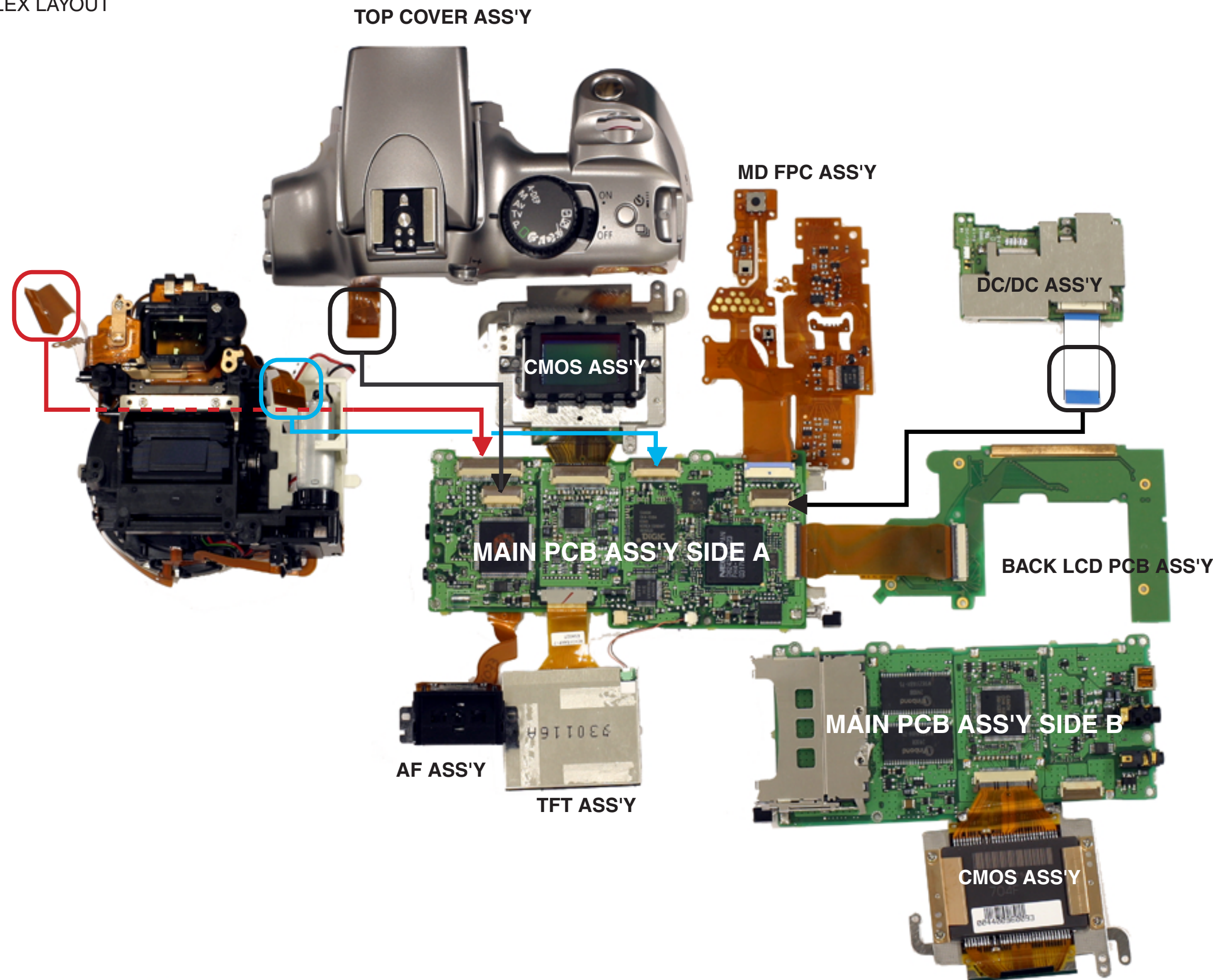
Copyright

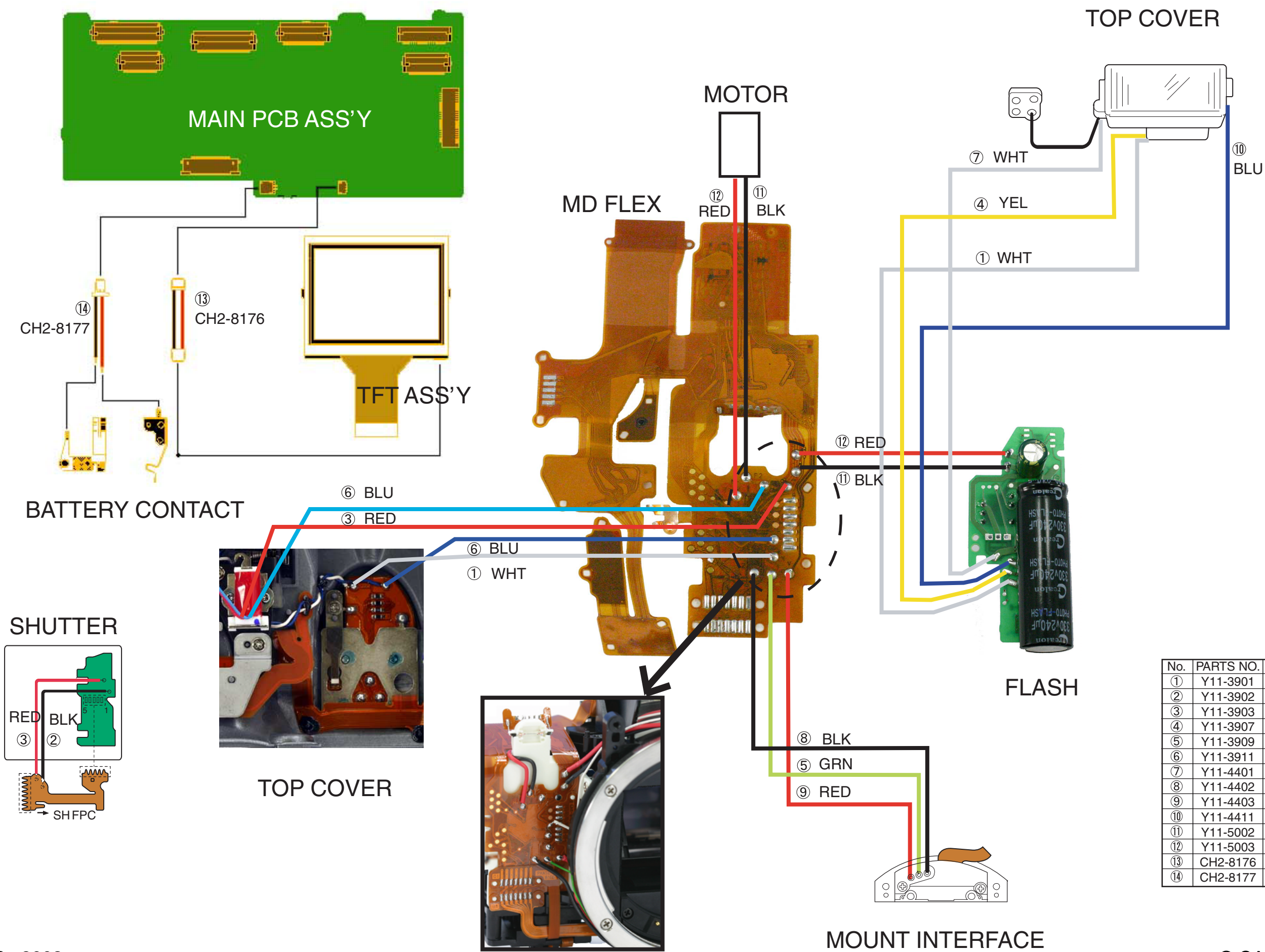
Canon Inc. retains the copyright to all data contained on this CD-ROM.

Reproduction, publication (including on the World Wide Web) alteration, translation into another language, or other use of the data in whole or part, contained on this CD-ROM without the written consent of Canon Inc., is prohibited.

CONTENTS

	Page
<i>Circuit Diagrams</i>	
1. WIRING DIAGRAM.....	1
EXTENSION FLEX LAYOUT	1
LEADWIRE LAYOUT	2
2. BLOCK DIAGRAM.....	3
2-1 GENERAL	3
2-2 POWER SUPPLY	4
3. P.C.B. DIAGRAM.....	5
3-1 MAIN P.C.B._SIDE A.....	5
3-2 MAIN P.C.B._SIDE B.....	6

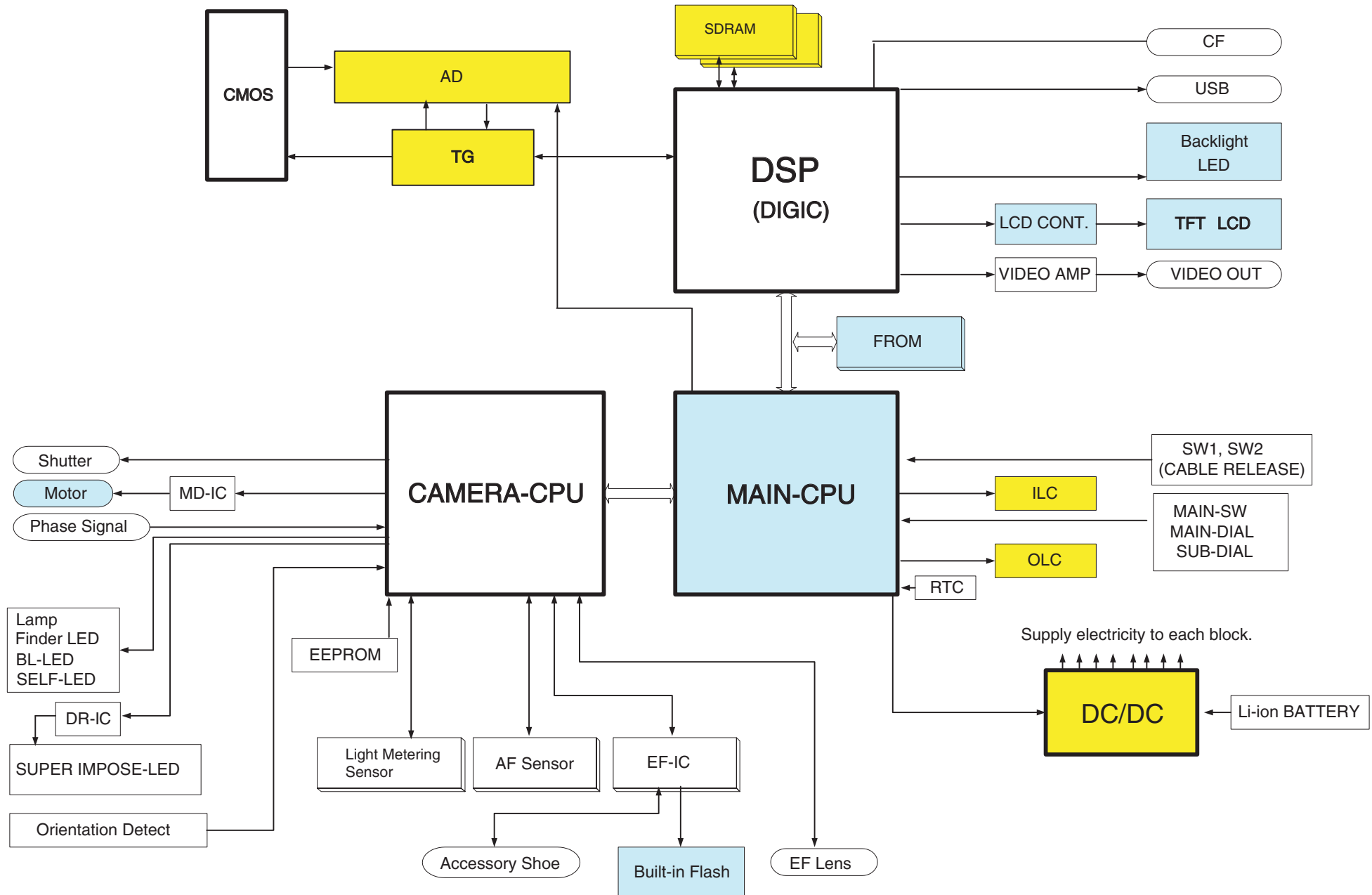




2. BLOCK DIAGRAM

2-1 GENERAL

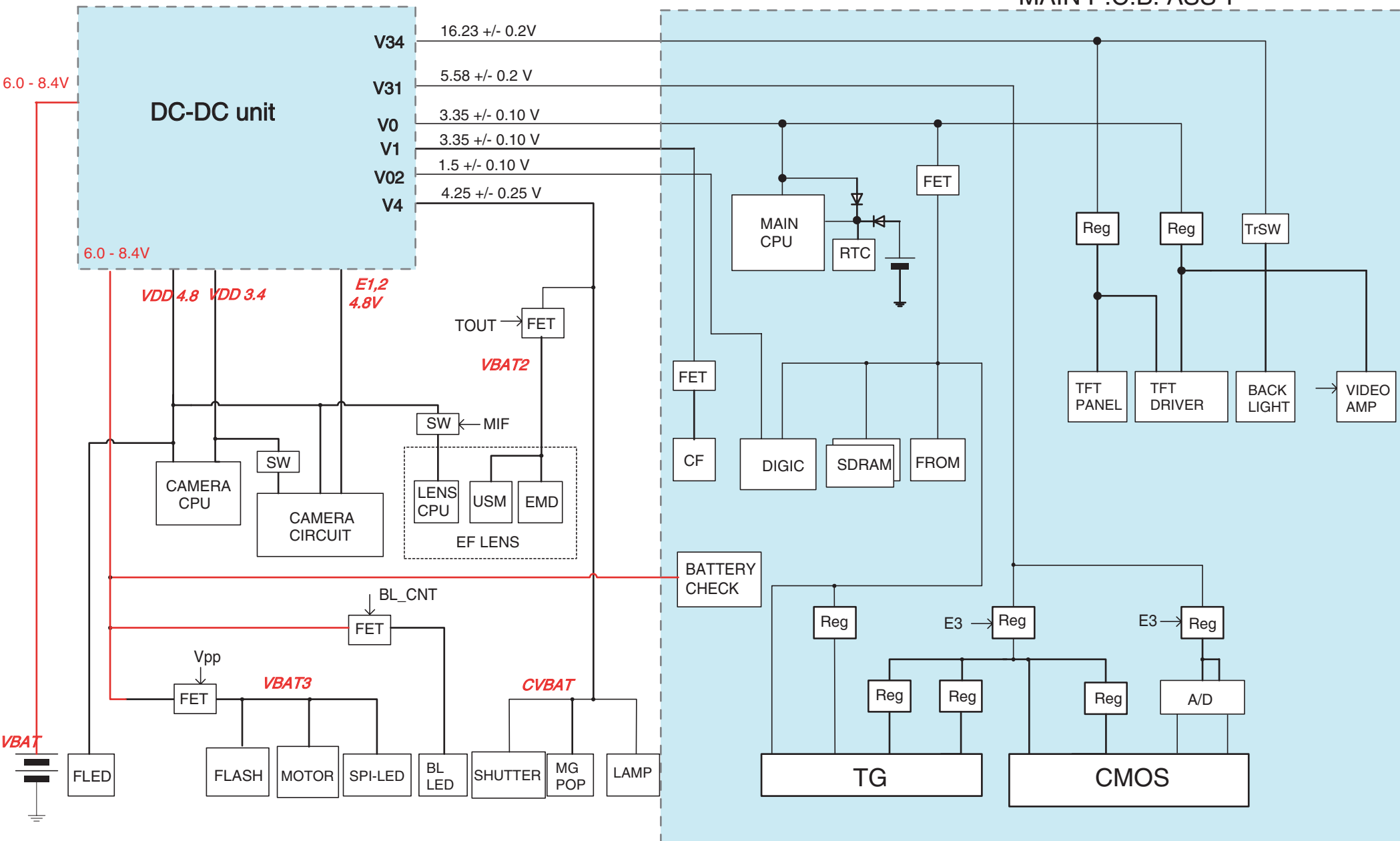
REF. NO. C12-6041.3.5



2-2 POWER SUPPLY

POWER SUPPLY BLOCK DIAGRAM

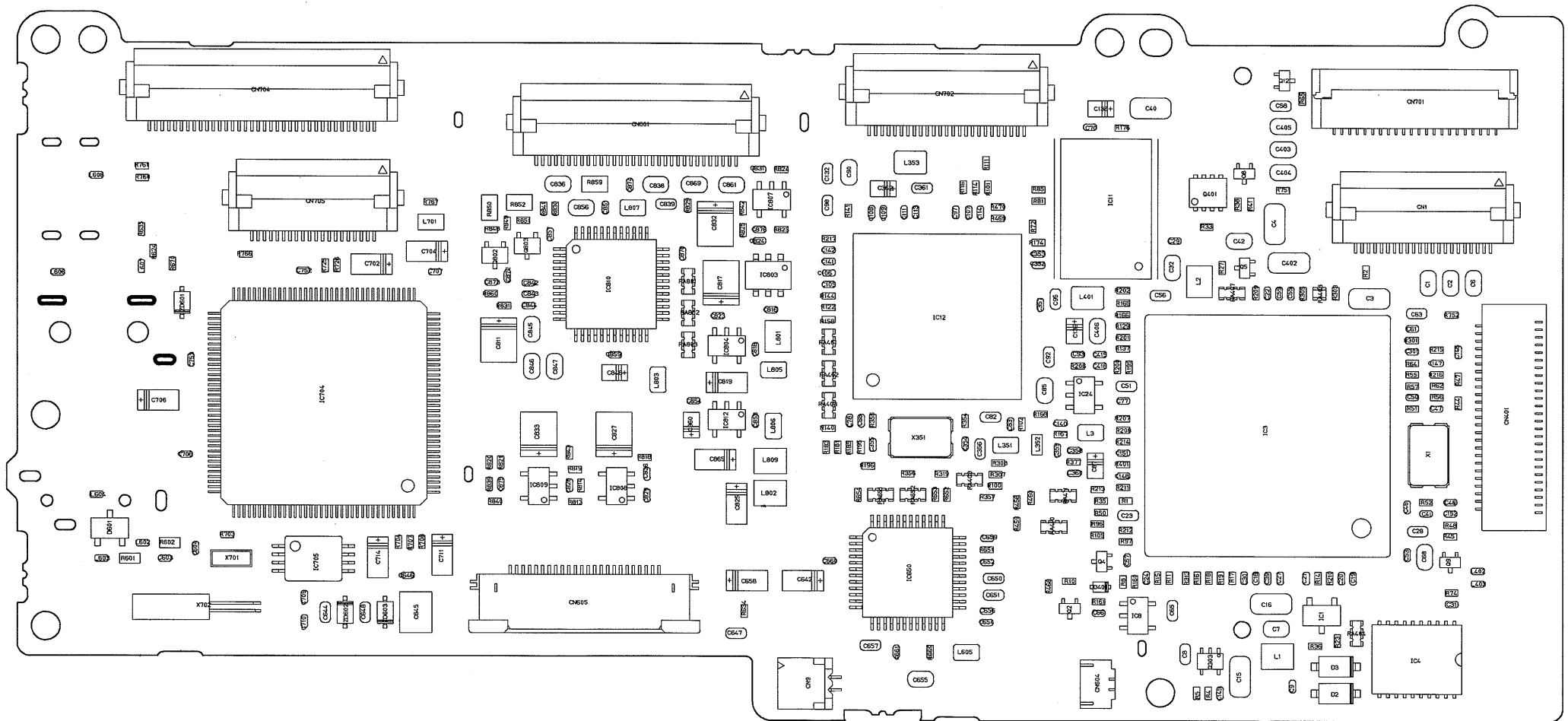
MAIN P.C.B. ASS'Y



3. P.C.B. DIAGRAM

3-1 MAIN P.C.B._SIDE A

REF. NO. C12-6041.3.5





Software Information

Trademarks

The product names and company names described in this CD-ROM are the registered trademarks of the individual companies.

Copyright

Canon Inc. retains the copyright to all data contained on this CD-ROM.

Reproduction, publication (including on the World Wide Web) alteration, translation into another language, or other use of the data in whole or part, contained on this CD-ROM without the written consent of Canon Inc., is prohibited.

CONTENTS

	Page
<i>Software Information</i>	
1. OVERVIEW	1
1.1 Product Overview	1
1.2 Compatible Operating Systems and Computer Environments	1
1.3 Supported Languages	2
1.4 Supported Cameras and Connection Modes	2
1.5 Software Overview	3
1.6 Function Comparison from Other Manufacturers	7

1. OVERVIEW

1.1 Product Overview

EOS DIGITAL SOLUTION DISK is the hybrid Windows/Macintosh CD-ROM containing the software for DIGITAL EOS.

The Version 6 software in this release is compatible/bundled with the EOS D REBEL / 300 D. The software applications are the same as those in Version 5 bundled with the EOS 10D, and the inclusion of 2 drivers (for the EOS D REBEL / 300 D and EOS 10D) for connecting to the camera is planned.

Table 001 lists the types of software.

File Viewer Utility supports images from all digital EOS products from the EOS D30 onwards and can also be used to process RAW images and work with images via a card reader.

Table 001 Types of Ver.6 Software

Software	Windows version	Mac OS version
File Viewer Utility	Yes	
RemoteCapture	Yes	
WIA Driver	Yes	No
TWAIN Driver	Yes	No
ZoomBrowser EX	Yes	No
PhotoRecord	Yes	No
ImageBrowser	No	Yes
PhotoStitch	Yes	

1.2 Compatible Operating Systems and Computer Environments

As shown in Table 002, the compatible operating systems and computer environments are the same as for Version 5 bundled with the EOS 10D.

Table 002 Compatible Operating Systems and Computer Environments

OS	Windows		Macintosh	
	Windows XP		Mac OS X (version 10.2 recommended)	
	Windows 2000			
	Windows Me			
	Windows 98 SE		Mac OS 9.0 to 9.2 (Mac OS to 9.2 recommended)	
Computer	PC with one of the above OS preinstalled and a USB port as a standard feature * Upgraded machines not supported.		Macintosh computer with one of the above OS installed and a USB port as a standard feature (users of first-generation iMacs require a firmware update.)	
CPU	Windows XP	300 MHz Pentium or better	Power PC	
	Windows 2000	150 MHz Pentium or better		
	Windows Me			
	Windows 98 SE			
RAM	Windows XP	Minimum 256 MB	Mac OS X (10.1, 10.2)	Minimum 256 MB
	Windows 2000	Minimum 128 MB required	Mac OS 9.0 to 9.2	Minimum 128 MB required
	Windows Me			
	Windows 98 SE			
Interface	USB			
Available hard disk space (MB/or more)	File Viewer Utility	100	File Viewer Utility	100
	RemoteCapture	20	RemoteCapture	15
	WIA Driver	25	ImageBrowser	50
	TWAIN Driver	25	PhotoStitch	30
	ZoomBrowser EX	120	—	
	PhotoRecord			
	PhotoStitch			
Display	800 × 600 dots, High Color (16-bit) or more 1024 × 768 dots True Color (32-bit) or more		800 × 600 dots, 32,000 colors or more required 1024 × 768 dots or more recommended	
Remarks	CD-ROM drive required for installation.			

* The WIA driver runs on Windows XP and Windows Me.

* The TWAIN driver runs on Windows 2000 and Windows 98SE.

1.3 Supported Languages

This release supports 7 languages: Japanese, English, French, German, Italian, Spanish and Chinese (Simplified Chinese).

There are 3 language versions of the CD-ROM. Table 003 shows the languages supported by each disk.

Table 003 Supported Languages

CD-ROM version	English	Japanese	Chinese	French	Spanish	German	Italian
For Japan/China	Yes	Yes	Yes	No	No	No	No
For North and South America and Europe 1	Yes	No	No	Yes	Yes	No	No
For Europe 2	Yes	No	No	No	No	Yes	Yes

* CDs for Japan/China will initially be released only in Japanese and English. This will be expanded to include Chinese once the Chinese-compatible software is completed.

1.4 Supported Cameras and Connection Modes

Supported cameras are connected via a USB interface using a dedicated cable that allows images to be downloaded to the computer and data to be exchanged between the camera and computer.

Note that in addition to loading images by a cable connection to the computer, images can also be loaded by a card reader available on the market.

1.5 Software Overview

1) Software for Windows

(1) File Viewer Utility

When a supported camera is connected to a computer using the dedicated cable, this software allows the user to view and download captured images saved on a CF card in the camera (or images saved on any drive). It can also be used to process RAW images, transfer images to retouching software, or open the Camera Settings dialog box so that you can customize the camera functions. Also, because File Viewer Utility can run as a standalone application, it can be used at the same time as RemoteCapture or an image retouching software.

The main change to the specifications from the current File Viewer Utility is as follows:

- Addition of the same function for setting the resolution during image transfer that was provided in the TWAIN driver/Plug-In Module on the EOS DIGITAL SOLUTION DISK Version 3 (bundled with the EOS-1D and EOS D60).

The RAW image processing functions provided on the EOS D REBEL / 300 D differ from those on the EOS 10D primarily as follows:

- The EOS D REBEL / 300 D features the same RAW and JPEG simultaneous recording as that on the EOS D60. The JPEG extraction function can only extract Middle/Fine quality JPEG images from EOS D REBEL / 300 D RAW images.
- The EOS D REBEL / 300 D has no color temperature setting function, however, the color temperature can be set for EOS D REBEL / 300 D RAW images in File Viewer Utility.

Table 004 on the next page shows a comparison of the main functions supported on the EOS D REBEL / 300 D, EOS 10D and EOS D60.

Table 004 Comparison of the main functions supported on the EOS D REBEL / 300 D, EOS 10D and EOS D60

Cameras			EOS D REBEL / 300 D		EOS 10D		EOS D60	
Recording quality			JPEG RAW		JPEG	RAW	JPEG	RAW
Image display	Display image		Yes		Yes		Yes	
	Display AF point		Yes		Yes		No	
	Display image information		Yes		Yes		Yes	
	Input comment		Yes		Yes		Yes	
Image manipulation	Protect image		Yes		Yes		Yes	
	Rotate image		Yes		Yes		Yes	
	Play back sound		No		No		No	
	Erase image		Yes		Yes		Yes	
Image transfer	Register image retouching software		Yes		Yes		Yes	
	Transfer image to registered image retouching software		Yes		Yes		Yes	
	Set retsolution when transferring		Yes		Yes		Yes	
Print image (print index)			Yes		Yes		Yes	
Image save	Save/Convert image	JPEG	Yes		Yes		Yes	
		RAW	No	Yes	No	Yes	No	Yes
		TIFF (8bit / 16bit)	No	Yes	No	Yes	No	Yes
	Save index		Yes		Yes		Yes	
	Extract JPEG		No	Yes	No	Yes	No	Yes
RAW image processing	Digital exposure compensation		No	Yes	No	Yes	No	Yes
	Set white balance		No	Yes	No	Yes	No	Yes
	Click white balance		No	Yes	No	Yes	No	Yes
	Set color temperature		No	Yes	No	Yes	No	
	Save white balance data		No		No		No	
	Sharpness		No	Yes	No	Yes	No	Yes
	Contrast		No	Yes	No	Yes	No	Yes
	Color saturation		No	Yes	No	Yes	No	Yes
	Color tone		No	Yes	No	Yes	No	Yes
	AdobeRGB		No	Yes	No	Yes	No	
	Color matrix		No		No		No	
	Adjust tone curve		No		No		No	
	Set IPTC information		No		No		No	
	Copy/Paste processing parameters		No	Yes	No	Yes	No	Yes
RAW processing settings for transfer/save	Linear processing		No	Yes	No	Yes	No	Yes
	False color filter		No	Yes	No	Yes	No	Yes
	False resolution filter		No		No		No	
	16% reduction preview		No	Yes	No	Yes	No	Yes
	8-bit/16-bit RAW image transfer		No	Yes	No	Yes	No	Yes
Camera settings function	Basic settings		Yes		Yes		No	
	Personal functions		No		No		No	
	Parameters		No		No		No	
	Personal white balance		No		No		No	

* The drivers needed for connecting to the camera are planned for the EOS D REBEL / 300 D and EOS 10D. The EOS D60, EOS D30, EOS-1D and EOS-1Ds only support image downloading to the File Viewer Utility via a card reader.

(2) RemoteCapture

Software for controlling the camera from the computer and downloading images directly to the computer. As well as shooting single frames, it can shoot using a timer (2 to 30 seconds in 1-second increments) or interval timer (5 seconds to 60 minutes in 1-second increments).

Table 005 lists a comparison of the main functions.

Table 005 Comparison of the main functions supported on the EOS D REBEL / 300 D and EOS 10D

Main functions of the RemoteCapture			Disk version and camera model		
			Ver. 6		Ver. 3
			EOS D REBEL / 300 D	EOS 10D	EOS D60
Shooting	Single-frame shooting		Yes	Yes	Yes
	Timer shooting		Yes	Yes	Yes
	Interval timer shooting		Yes	Yes	Yes
	Test shots		Yes	Yes	No
	Camera shooting	Single-frame	Yes	Yes	Yes
		Continuous	Yes	Yes	Yes
Image display	Display single-frame		Yes	Yes	Yes
	Display thumbnails		Yes	Yes	Yes
	Display enlarged		Yes	Yes	Yes
Information display	Camera settings information		Yes	Yes	Yes
	Image information		Yes	Yes	Yes
	Histogram		Yes	Yes	Yes
Image manipulation	Rotate image		Yes	Yes	Yes
	Erase image		Yes	Yes	Yes
	Input comment		Yes	Yes	Yes
Print image (print index)			Yes	Yes	Yes
Shooting settings on camera (for RemoteCapture connection)			Yes	Yes	Yes
Camera settings from RemoteCapture	Shooting mode		No	No	No
	ISO sensitivity		Yes	Yes	No
	Recording quality		Yes	Yes	No
	Metering mode		No	Yes	No
	Shutter speed		Yes	Yes	No
	Aperture value		Yes	Yes	No
	Exposure compensation		Yes	Yes	No
	Rotate image		*1	*1	Yes
	White balance		Yes	Yes	No
	Color temperature		No	Yes	No
	Parameters		No	No	No
	Color matrix		No	No	No
Default settings	Set release key		Yes	Yes	Yes
	Set save destination		Yes	Yes	Yes
	Set file name		Yes	Yes	Yes

* SOLUTION DISK Ver.3 and EOS D60 listed for function comparison purposes only.

*1 Because the camera automatically detects vertical shooting position, images shot vertically are automatically rotated.

The application software below conform to the main specifications of the software on the EOS DIGITAL SOLUTION DISK Version 5 bundled with the EOS 10D and the DIGITAL CAMERA SOLUTION DISK bundled with the latest PowerShot series cameras.

(3) WIA Driver

This driver is compatible with the Microsoft WIA (Windows Image Acquisition) standard and runs on Windows XP and Windows Me. When a supported camera is connected to a computer using the dedicated cable, the camera can be handled as a removable disk for easy viewing of images on a CF card or downloading JPEG images to the computer using the [Scanner and Camera Wizard] or Microsoft Explorer (but not to display or download RAW images). By using WIA TWAIN, you can also transfer JPEG images (but not RAW images) to TWAIN-compatible software.

(4) TWAIN Driver

This driver conforms to the TWAIN standard and runs on Windows 2000 and Windows 98SE.

When a supported camera is connected to a computer using the dedicated cable, this software allows the user to view and download JPEG images saved on a CF card in the camera and to transfer those images to TWAIN-compatible software (but not RAW images).

Note that this driver can only be started up from TWAIN-compatible software.

(5) ZoomBrowser EX

Image integration software that allows you to view and manage your images. Note that access to CIG (Canon Image Gateway) is available on the Japanese and Europe version.

For processing of RAW images, select the RAW image from the window and start the File Viewer Utility.

(6) PhotoRecord

Software for layout and printing. In conjunction with ZoomBrowser EX, it is capable of automatic layout printing and index printing.

(7) PhotoStitch

Software for merging images. PhotoStitch can merge multiple images into a single image with great precision and is ideal for creating panorama images.

2) Software for Macintosh

(1) File Viewer Utility

Macintosh version of the File Viewer Utility for Windows.

(2) RemoteCapture

Macintosh version of RemoteCapture for Windows.

(3) ImageBrowser

Image viewing and image management software with the same level of functionality as ZoomBrowser EX for Windows.

Layout printing is provided as one of the print functions.

(4) PhotoStitch

Macintosh version of PhotoStitch for Windows.

1.6 Function Comparison from Other Manufacturers

Table 006 Function Comparison for File Viewer Utility and Competing Products from Other Manufacturers

Manufacturer			Canon		Nikon		FUJIF
Product			EOS DIGITAL SOLUTION DISK		Nikon View5	Nikon Capture3	Hyper-Utility Software HS-S2
Version			Ver.6		Ver.5	Ver.3	Ver.1
Software			File Viewer Utility		Nikon Browser Nikon Viewer Nikon Editor	Nikon Browser Nikon Capture Editor	FinePixViewer3.1 RAW FILE CONVERTER EX
Format			Bundled with the product		Bundled with the product	Option/24,000yen	Option/18,500yen
Supported comparison cameras			EOS D REBEL / 300 D	EOS 10D	D100		FinePix S2 PRO
Image display	Displayed image formats	JPEG/RAW/TIFF	Yes/Yes/Yes	Yes/Yes/Yes	Yes/Yes/Yes		Yes/Yes/Yes
		BMP/PICT	No/No	No/No	No/No		Yes/Yes
	Display single-frame/thumbnails		Yes/Yes	Yes/Yes	Yes/Yes		Yes/Yes
	Display list		No	No	No		Yes
	Display enlarged/reduced		Yes (3 levels only)	Yes (3 levels only)	Yes		Yes
	Display slideshow		No	No	Yes		Yes
	Quick display setting (cache, etc.) function		No	No	Yes		No
Image information display	Display image information		Yes	Yes	Yes		Yes
	Display AF point		Yes	Yes	No		No
	Display color space/x-y coordinates		Yes/Yes	Yes/Yes	No/No	Yes/Yes	No/No
	Display RGB values/brightness values		Yes/No	Yes/No	No/No	Yes/Yes	No/No
Add data to image information	Add comment to image information		Yes	Yes	Yes		No
	Add data to image information		No	No	Yes		No
	Display folder tree		Yes	Yes	Yes		Yes
Interface	Manipulate image (move, copy, etc.)		Yes	Yes	Yes		Yes
	Manipulate folder (move, copy, etc.)		Yes	Yes	No		Yes
	Select image from keyboard		Yes	Yes	Yes		Yes
	Specify sort settings		No	No	Yes		Yes
	Customize window		No	No	No		Yes
Image manipulation	Protect/Erase image		Yes/Yes	Yes/Yes	Yes/Yes		No/Yes
	Rotate/Reverse image		Yes/No	Yes/No	Yes/Yes		Yes/No
	Trimming		No	No	? (Save trimmed only)		Yes
	Hand tool function		No	No	Yes		Yes
	Auto playback		No	No	Yes		No
	Add text to image		No	No	No		Yes
	Display grid lines		No	No	Yes		No
Image processing	Adjust tone curve		No	No	No	Yes	Yes*1
	Color balance	Adjust color balance	No	No	Yes		No
		Brightness	No	No	Yes		No
		Contrast	Yes*1	Yes*1	Yes		No
	Unsharp mask		No	No	No	Yes	No
	Noise reduction		No	No	No	Yes	No
	Digital exposure compensation		Yes	Yes	Yes		Yes*1
RAW image processing	Set white balance		Yes	Yes	Yes		Yes
	Set color temperature		No	Yes	No	Yes	Yes
	Click white balance		Yes	Yes	No	Yes	Yes
	Sharpness		Yes	Yes	No	Yes	Yes
	Contrast		Yes	Yes	No	Yes	No
	Color saturation		Yes	Yes	No	Yes	No
	Color tone		Yes	Yes	No	Yes	No
	Adjust chroma		No	No	No	Yes	Yes
	Color matrix		No	No	No	Yes	No
	AdobeRGB		Yes	Yes	No	Yes	Yes
	Set IPTC information		No	No	No		No
	Linear processing		Yes	Yes	No		No
	False color filter		Yes	Yes	No		No
	False resolution filter		No	No	No		No
	Batch processing		No	No	No	Yes	Yes
Image processing/Save setting data for RAW image processing/Import			No	No	Yes		Yes
Image saving	Image save format	JPEG	Yes	Yes	Yes		Yes
		RAW (8bit / 16bit)	Yes	Yes	Yes		Yes
		TIFF	Yes	Yes	Yes		Yes
		BMP	No	No	No		Yes
		PICT	No	No	No		Yes
	Set resolution/image size		No	No	Yes		Yes
	Save index		Yes	Yes	No		No
Image transfer	Extract JPEG		Yes	Yes	No		No
	Register/Transfer image to image retouching software		Yes/Yes	Yes/Yes	Yes/Yes		Yes/Yes
	Set resolution when transferring images		Yes	Yes	No		No
Print image	Print image		△*2	△*2	Yes		Yes
	Print settings		No	No	Yes		Yes
	DPOF settings		No	No	No		Yes
E-mail transmission function			*3	*3	Yes		Yes
User registration/image upload functions for the Web			*4	*4	Yes		Yes
Profile settings	Set color space		No	No	Yes		Yes
	Set monitor profile		No	No	Yes		No
	Set printer profile		No	No	Yes		No
	Set CMYK profile		No	No	Yes		No

*1 RAW only *2 Index printing only *3 Available in ZoomBrowser EX/ImageBrowser *4 Available in ZoomBrowser EX/ImageBrowser + Canon Image Gateway

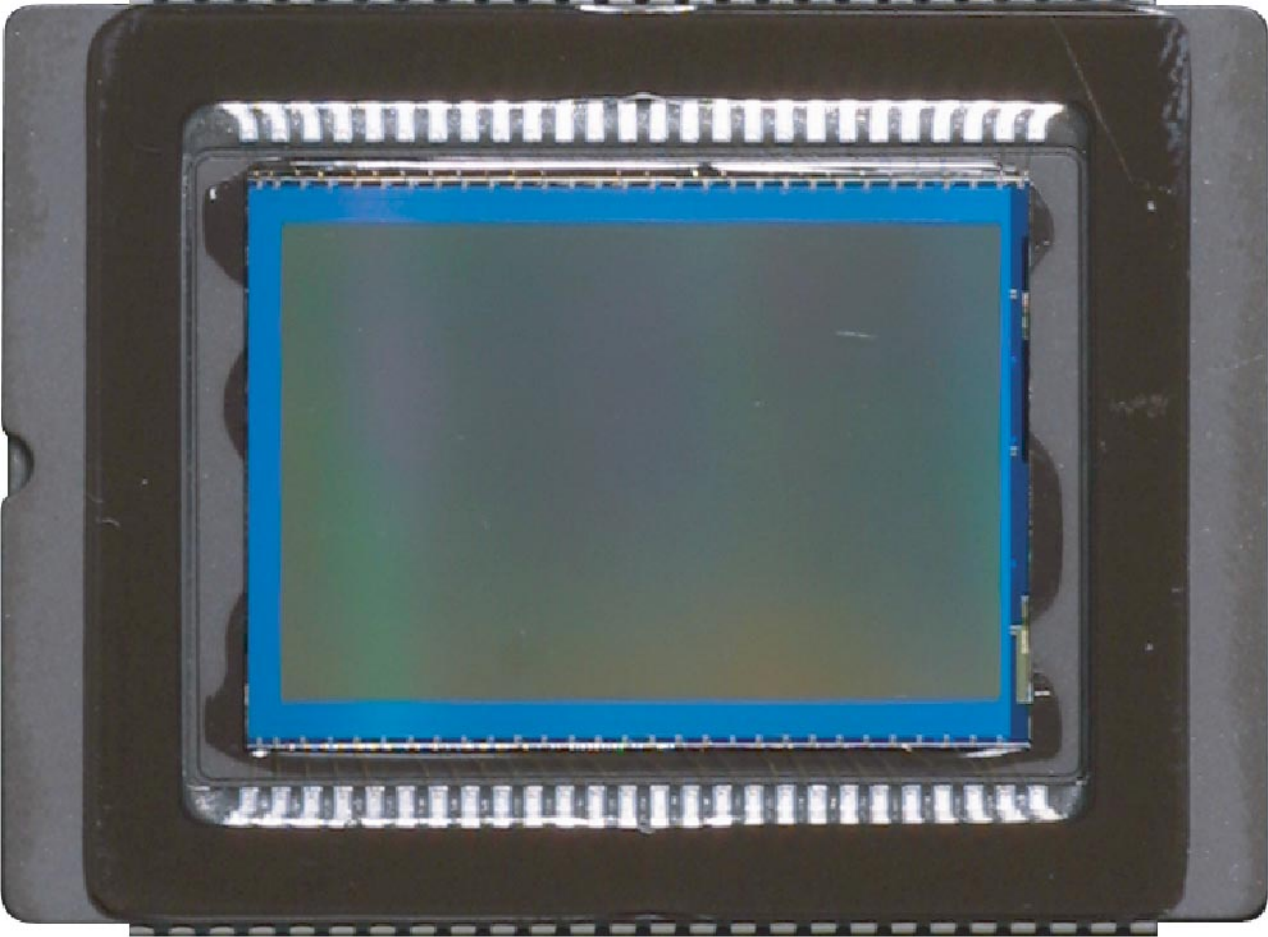
Table 007 Function Comparison for Camera settings function and Competing Products from Other Manufacturers

Manufacturer		Canon		Nikon		FUJI	
Product		EOS DIGITAL SOLUTION DISK		Nikon View5	Nikon Capture3	Hyper-Utility Software HS-S2	
Version		Ver.6		Ver.5	Ver.3	Ver.1	
Software		File Viewer Utility Camera setting functions		Nikon Transfer Nikon Browser	Nikon Capture Camera Control	FinePixViewer3.1 CAMERA SHOOTING SOFTWARE	
Form		Bundled with the product		Bundled with the product	Option/24,000yen	Option/18,500yen	
Supported comparison cameras		EOS D REBEL / 300 D	EOS 10D	D100		FinePix S2 PRO	
Basic Settings	Owner name	Yes	Yes	No	Yes	Yes	
	Date/Time	Yes	Yes	No	Yes	No	
	Initialize CF card	Yes	Yes	No	No	No	
	Display	Camera model name	Yes	Yes	No	Yes	Yes
		Body ID	Yes	Yes	No	No	No
		Firmware version	Yes	Yes	No	No	No
		Lens information	No	No	No	Yes	No
		Battery level	Yes	Yes	No	Yes	No
		Level of date battery	No	No	No	Yes	No
CF card information		Yes	Yes	No	No	No	
Personal functions		No	No	No	No	No	
Parameters		No	No	No	No	No	
Personal white balance settings		No	No	No	No	No	
Custom Functions		No	No	No	Yes	No	

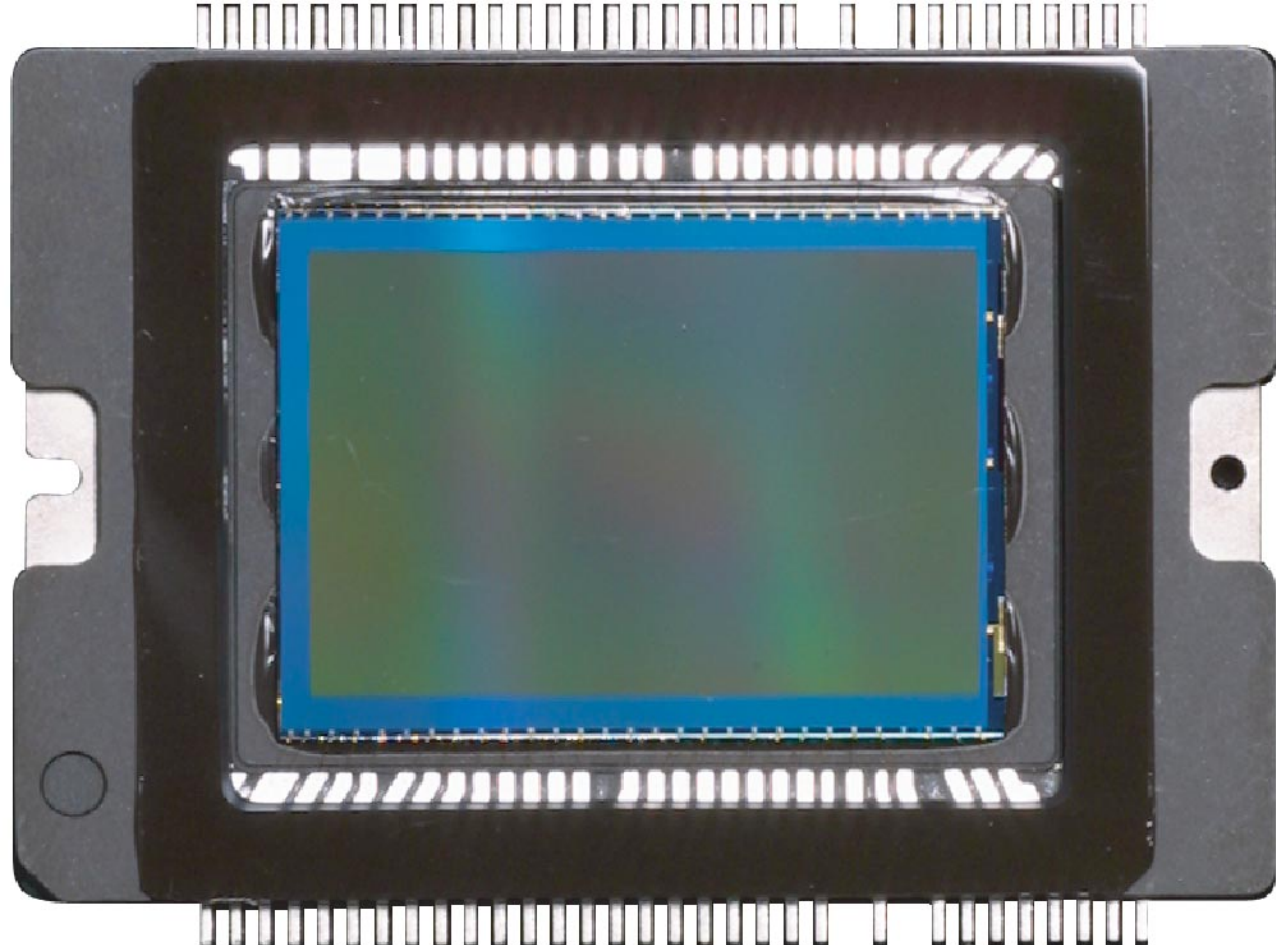
Table 008 Function Comparison for RemoteCapture and Competing Products from Other Manufacturers

Product		EOS DIGITAL SOLUTION DISK		Nikon Capture3	Hyper-Utility Software HS-S2
Version		Ver.6		Ver.3	Ver.1
Software		RemoteCapture		Nikon Capture Camera Control	CAMERA SHOOTING SOFTWARE
Format		Bundled with the product		Option/24,000yen	Option/18,500yen
Supported comparison cameras		EOS D REBEL / 300 D	EOS 10D	D100	FinePix S2 PRO
Shooting	Single-frame/Continuous shooting	Yes/No	Yes/No	Yes/Yes	Yes/No
	Timer shooting	Yes	Yes	No	No
	Interval timer shooting	Yes	Yes	Yes	Yes
	Test shots	Yes	Yes	No	No
	Focus lock shooting	No	No	No	Yes
	Single-frame/Continuous shooting on camera	Yes/Yes	Yes/Yes	Yes/Yes	Yes/Yes
Display/ Information	Display Single-frame/thumbnails/enlarged	Yes/Yes/Yes	Yes/Yes/Yes	*1/*1/*1	Yes/Yes/Yes
	Camera setting information	Yes	Yes	Yes	Yes
	Image information	Yes	Yes	*1	No
	Histogram	Yes	Yes	*1	Yes
Image manipulation	Rotate image	Yes	Yes	*1	Yes
	Erase image	Yes	Yes	*1	Yes
	Input comment	Yes	Yes	*1	Yes
	Input information	No	No	*1	No
Print image		Yes*2	Yes*2	*1	No
Default settings	Set release key	Yes	Yes	No	Yes
	Set save destination/file name	Yes/Yes	Yes/Yes	Yes/Yes	Yes/Yes
	Batch process after downloading	No	No	Yes	No
Shooting settings on camera (for RemoteCapture connection)		Yes	Yes	Yes	Yes
Camera settings from RemoteCapture	Shooting mode	No	No	Yes	Yes
	ISO sensitivity	Yes	Yes	Yes	Yes
	Recording quality	Yes	Yes	Yes	Yes
	Metering mode	No	Yes	Yes	No
	Shutter speed	Yes	Yes	Yes	Yes
	Aperture value	Yes	Yes	Yes	Yes
	Exposure compensation	Yes	Yes	Yes	Yes
	Program shift	No	No	Yes	No
	AF mode	No	No	Yes	No
	Select AF point	No	No	Yes	No
	Drive mode	No	No	Yes	No
	Sync mode	No	No	Yes	No
	Flash exposure compensation amount	No	No	Yes	No
	Set rotate image	No	No	No	Yes
	White balance	Yes	Yes	Yes	Yes
	Color temperature	No	Yes	Yes	No
	Custom white balance	No	No	Yes	No
	Parameters	No	No	Yes	Yes
	Color matrix	No	No	Yes	No
	Noise reduction	No	No	Yes	No
	Save/Import camera settings	No	No	Yes	Yes

*1 Using Nikon Browser *2 Index printing only



[← Back](#)





Quality

Red-eye on/off

AEB

WB-BKT

Beep

Custom WB

Parameters

▶ Parameter 1

Parameter 2

Adobe RGB

Set 1

Set 2

Set 3

Set up

Vivid and crisp colors

Standard parameters

← Back

Parameters

Set

1



Contrast



Sharpness



Saturation



Color tone



MENU ↩

← Back

Scanner and Camera Wizard

**Choose Pictures to Copy**

Pictures with check marks will be copied. To rotate a picture or view its properties, click it, and then click the appropriate button.



Clear All

Select All

43 picture(s) selected of 43

< Back

Next >

Cancel



iPhoto

Photo Library

Last Import



Title: Photo Library

Date: 06 Feb 2003

Size: 43 photos

Bytes: 7.5 MB



43 photos

Import

Organize

Edit

Book

Share



Canon IXY DIGITAL 320

Contains 43 photos

Import

☒ Erase contents after transfer

← Back





Quality

Large



Red-eye on/off Off

AEB -2..1..0..1..2+

WB-BKT . . . 0 . . .

Beep On

Custom WB

Parameters Parameter 1

← Back



Protect

Rotate

Print Order

Auto Play

Review On

Review time 2 sec.

← Back



Auto power off 1 min.

Auto rotate On

LCD Brightness 

Date/Time '03/09/04 17:54

File numbering Continuous

Format

 **Back**



Language English

Video system NTSC

Communication Normal

Clear all camera settings

Sensor clean.

Firmware Ver. 1.0.0

 **Back**



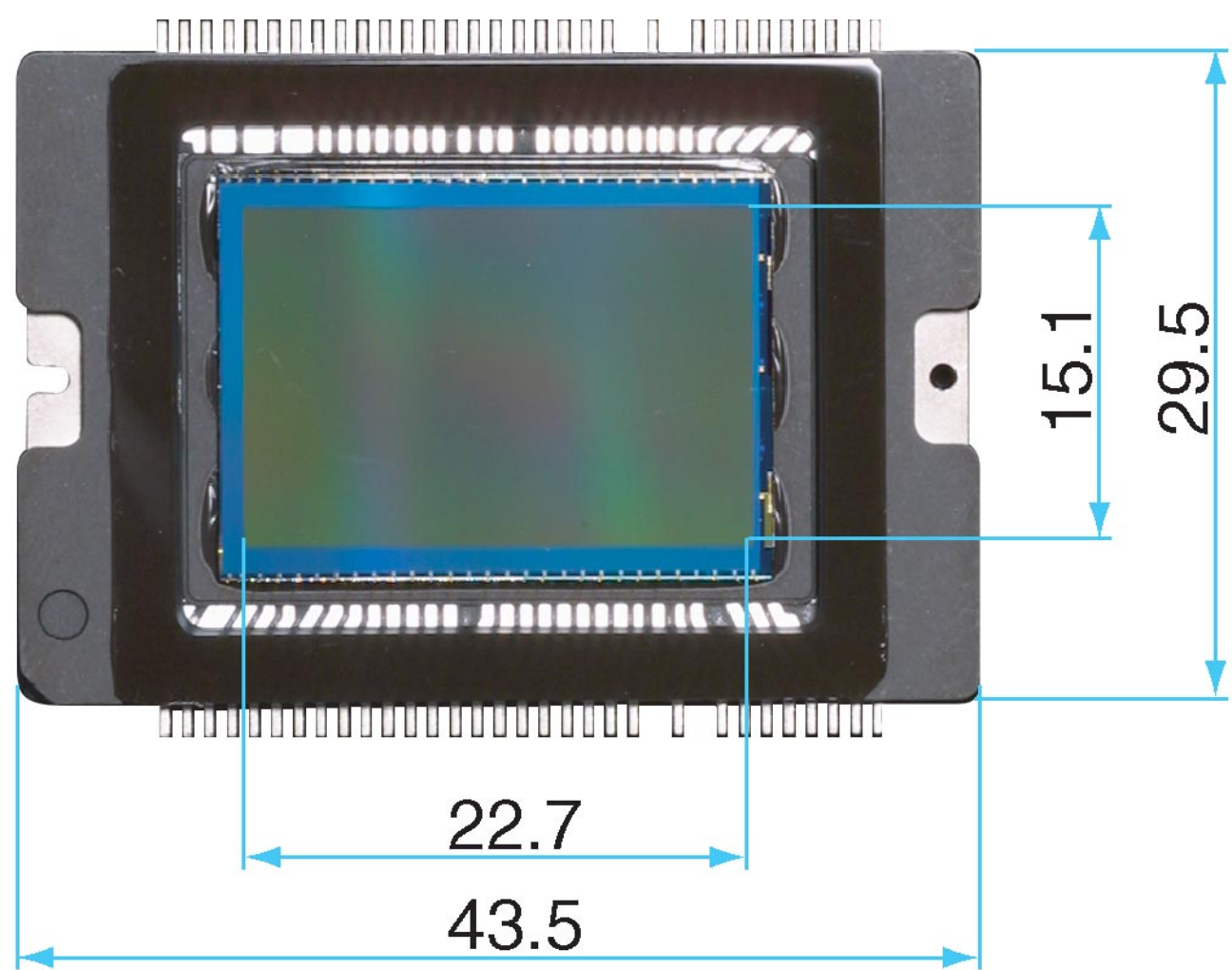








[← Back](#)





Quality

▶ Parameter 1

Vivid and crisp

Red-eye on/off

Parameter 2

"Standard"
parameter

AEB

Adobe RGB

WB-BKT

Set 1

Beep

Set 2

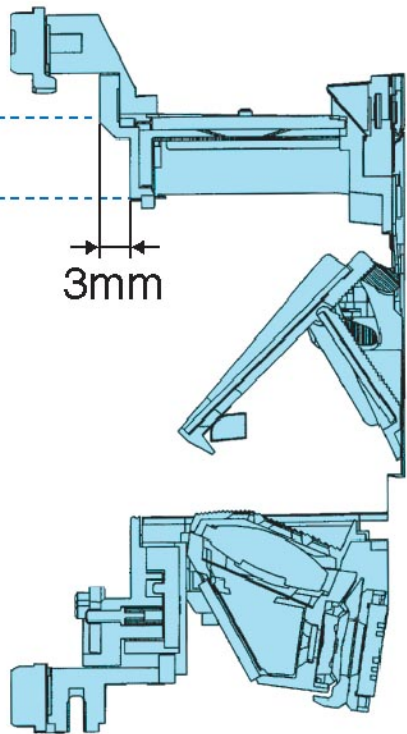
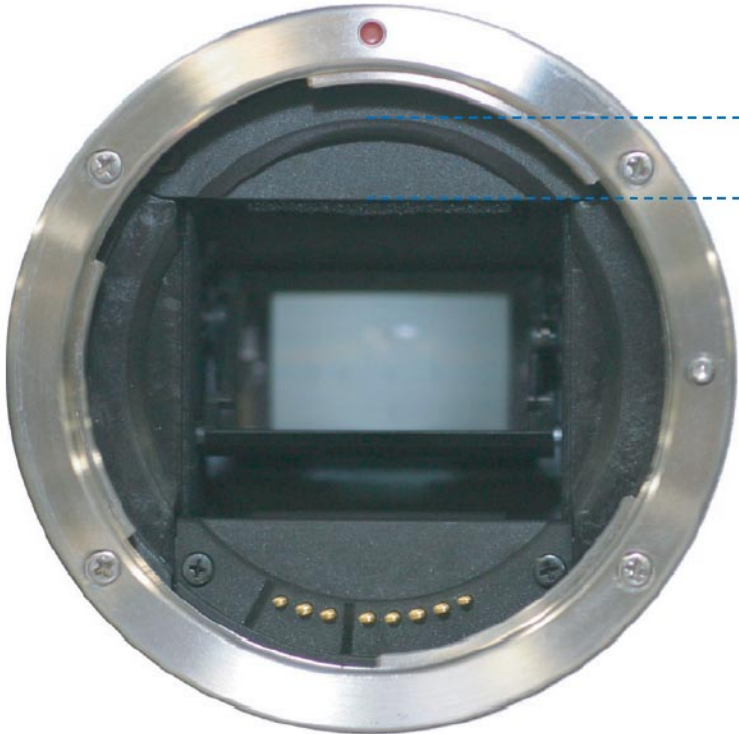
Custom WB

Set 3

Parameters

Set up

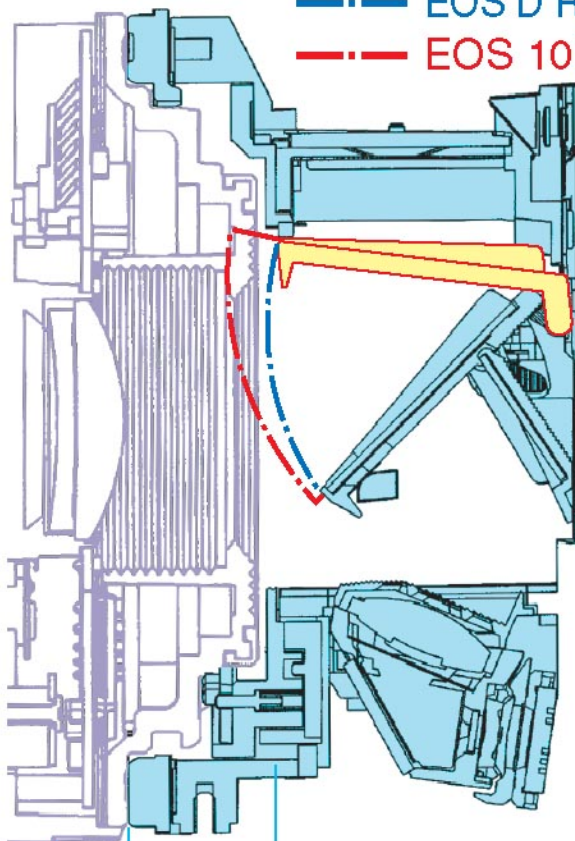
← Back



Main mirror path

— EOS D REBEL / 300 D

— EOS 10D

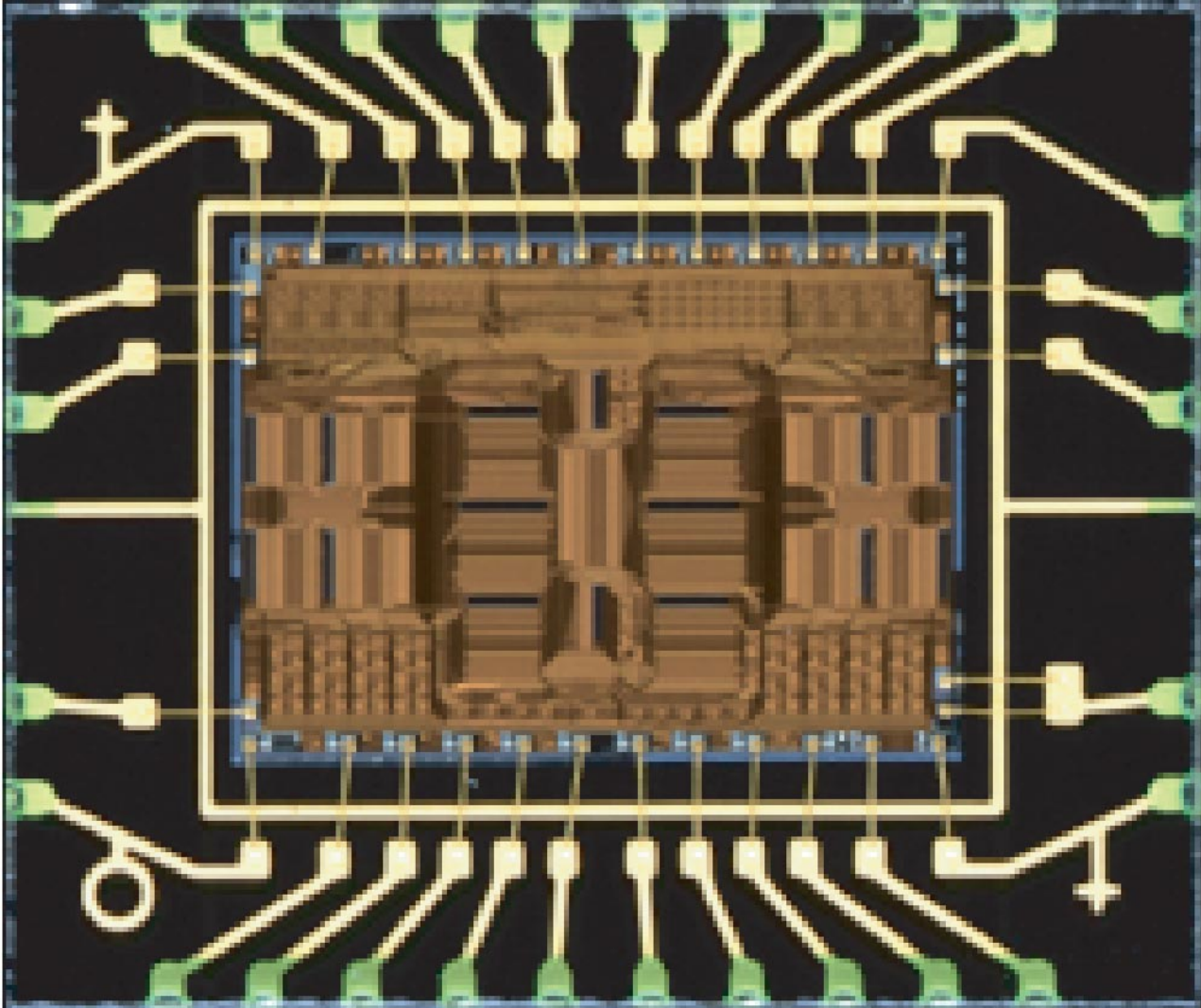


Mirror box

Mount surface

EF-S lens

← Back





Arm









Quality Large

Red-eye on/off Off

AEB -2..1..0..1..2+

WB-BKT

Beep On

Custom WB

Parameters Parameter 1





Protect

Rotate

Print Order

Auto Play

Review On

Review time 2 sec.

 **Back**



⚙️1

⚙️2

Auto power off 1 min.

Auto rotate On

LCD Brightness 

Date/Time '03/03/14 14:34

File numbering Continuous

Format

⬅️ Back



Language

English

Video system NTSC

Communication Normal

Clear all camera settings

Sensor clean.

Firmware Ver. 1.0.0

 **Back**



Language

Video system

Communication Normal

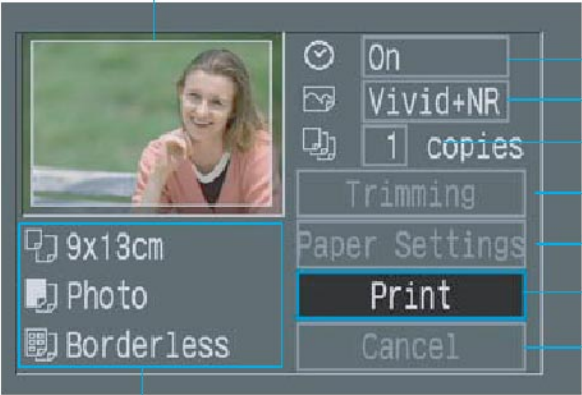
Clear all came▶PTP

Sensor clean.

Firmware Ver.

←Back

Printing area box: Displayed when the image is to be cropped.



Date Imprinting on or off

Printing Effects

Print quantity

Image cropping

Paper Size, Type, and Page Layout

Starts printing

Cancels this screen and returns to image playback

Indicates the Paper Size, Type, and Page Layout.







Paper Size

9x13cm

13x18cm

Hagaki

Wallet

A4

MENU Cancel

SET Next

 **Back**



Paper Type

Plain

Photo

Fast Photo

Default

MENU Previous

SET Next

 **Back**



Page Layout

Bordered

Borderless

Index

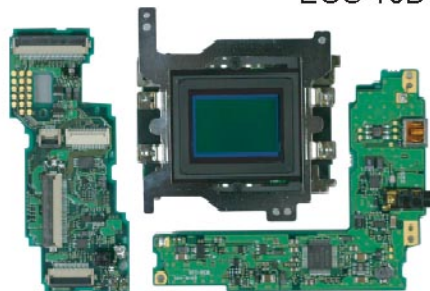
Default

MENU Previous

SET OK

 **Back**

EOS 10D



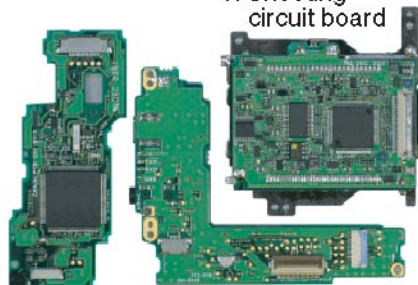
Front side



EOS D REBEL / 300 D



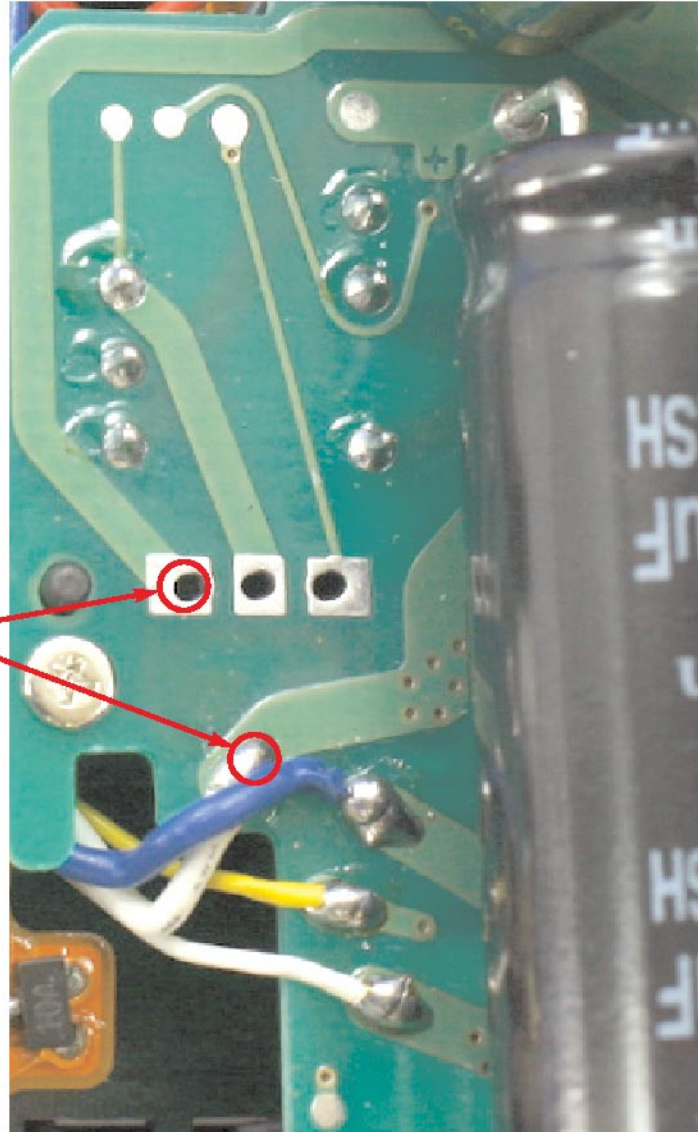
CF card slot

Digital/
video output/
remote control terminal1. Shooting
circuit board

Back side

2. Camera control
circuit board3. LCD monitor display
control circuit board4. Image-processing
circuit board

Discharge Positions



Canon DS6041

DC 8.1V 



NO. **0050000104**

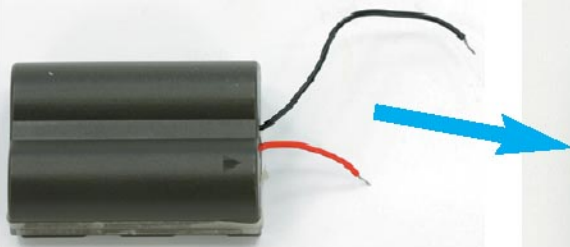
FC Tested To Comply
With FCC Standards
FOR HOME OR OFFICE USE



CANON INC.
MADE IN TAIWAN

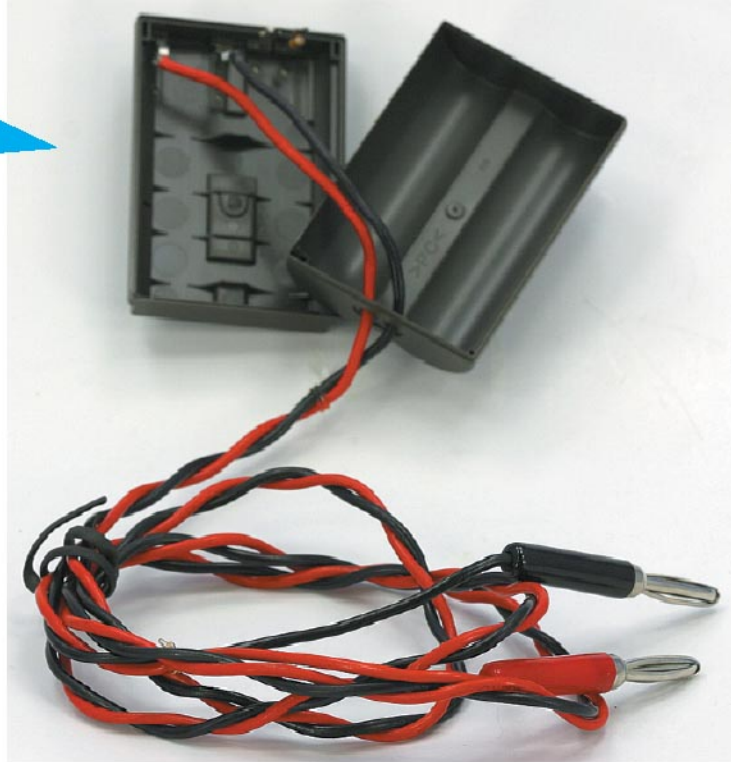
COMPLIES WITH THE CANADIAN
ICES-003 CLASS B SPECIFICATIONS.
RESPECTE LES EXIGENCES DE LA
CLASSE B DE LA NMB-003 DU CANADA.

 **Back**



DY9-1374-000

As right figure shows,
replace the lead wire
first and then put the
battery cover on.

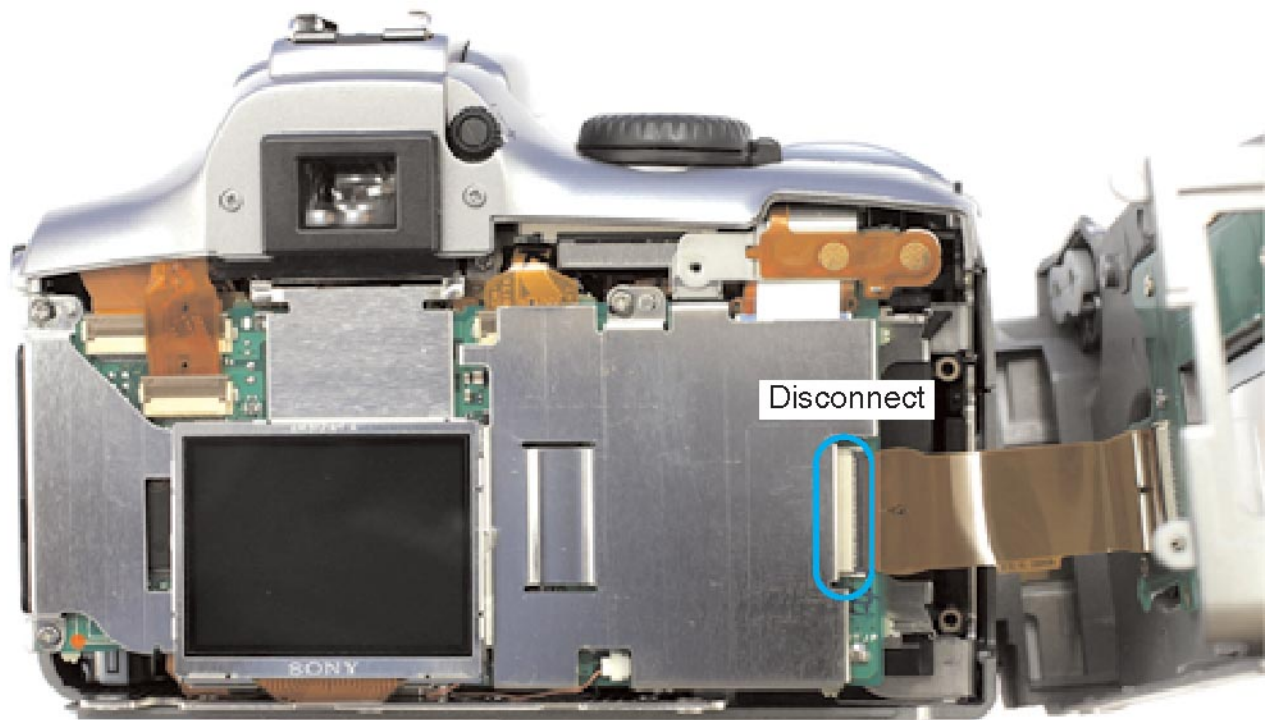


[!\[\]\(c3d993ca47bfe2a953c700506ce31fa0_img.jpg\) Back](#)





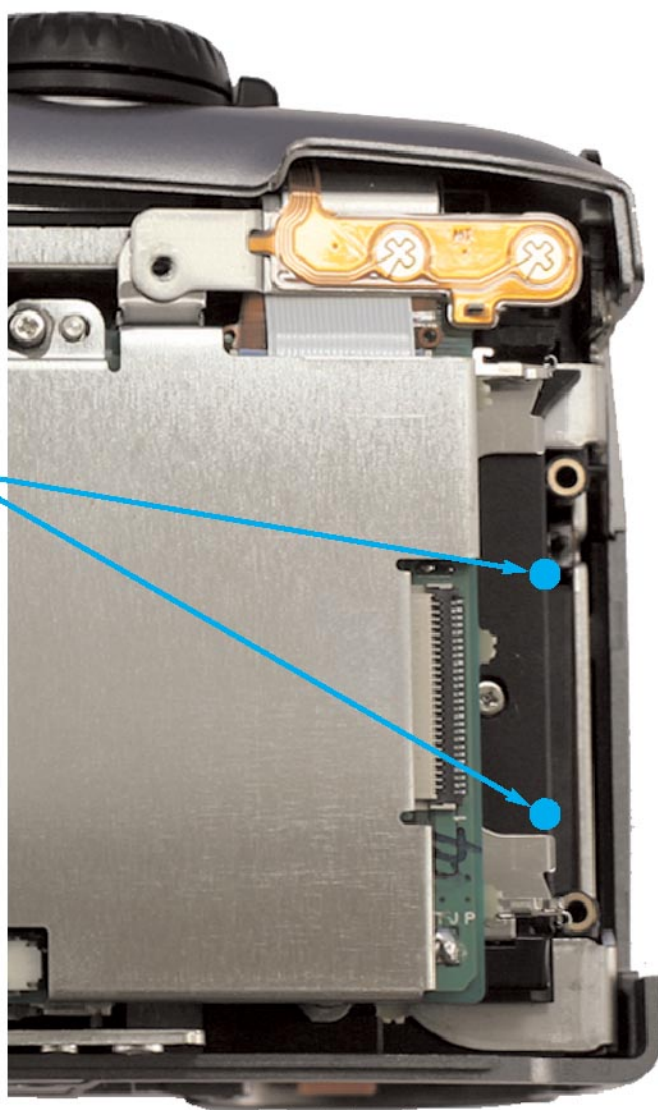
[← Back](#)



Disconnect

← Back

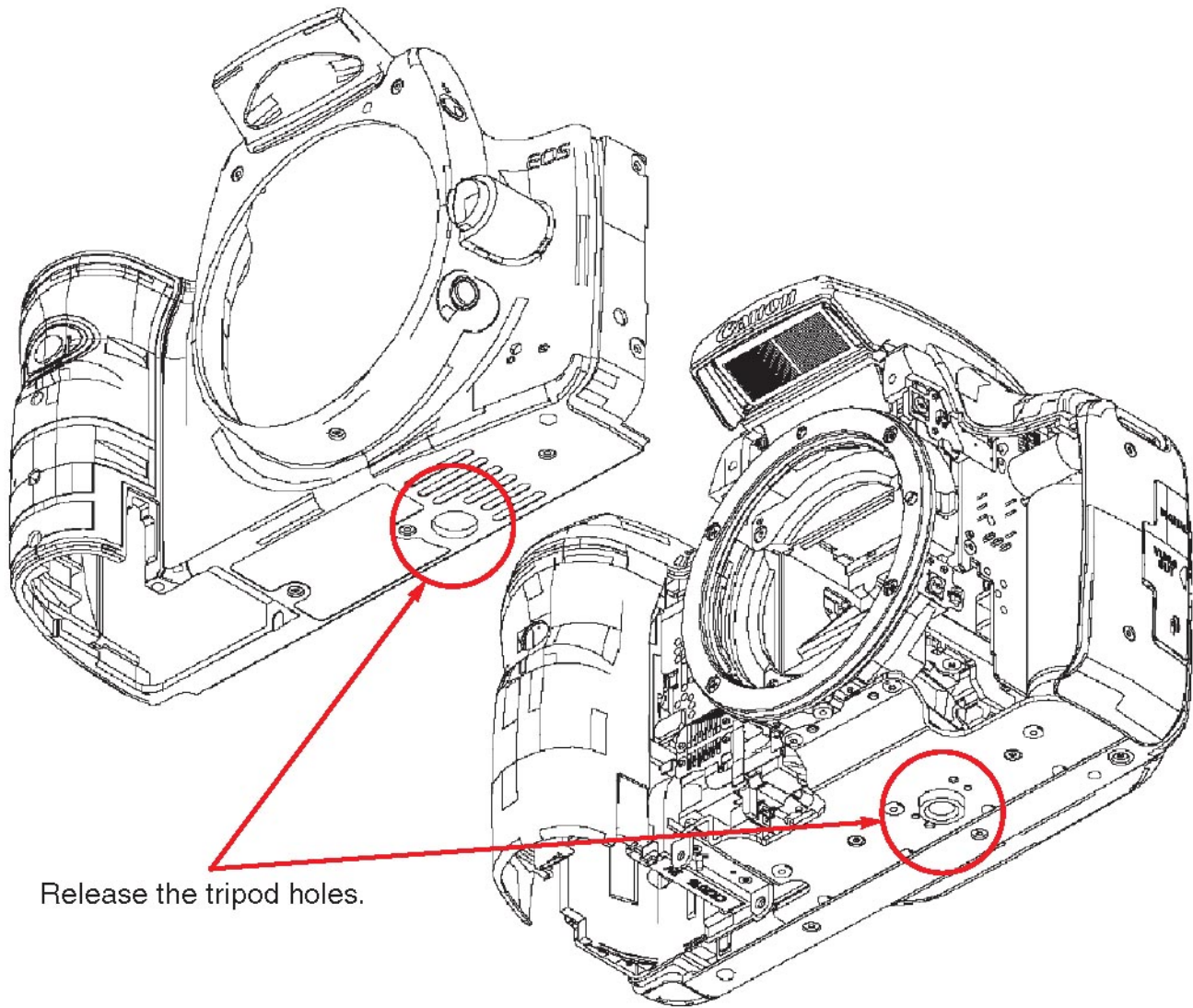
Remove the front cover
and two double-fastening
screws inside the battery
case.



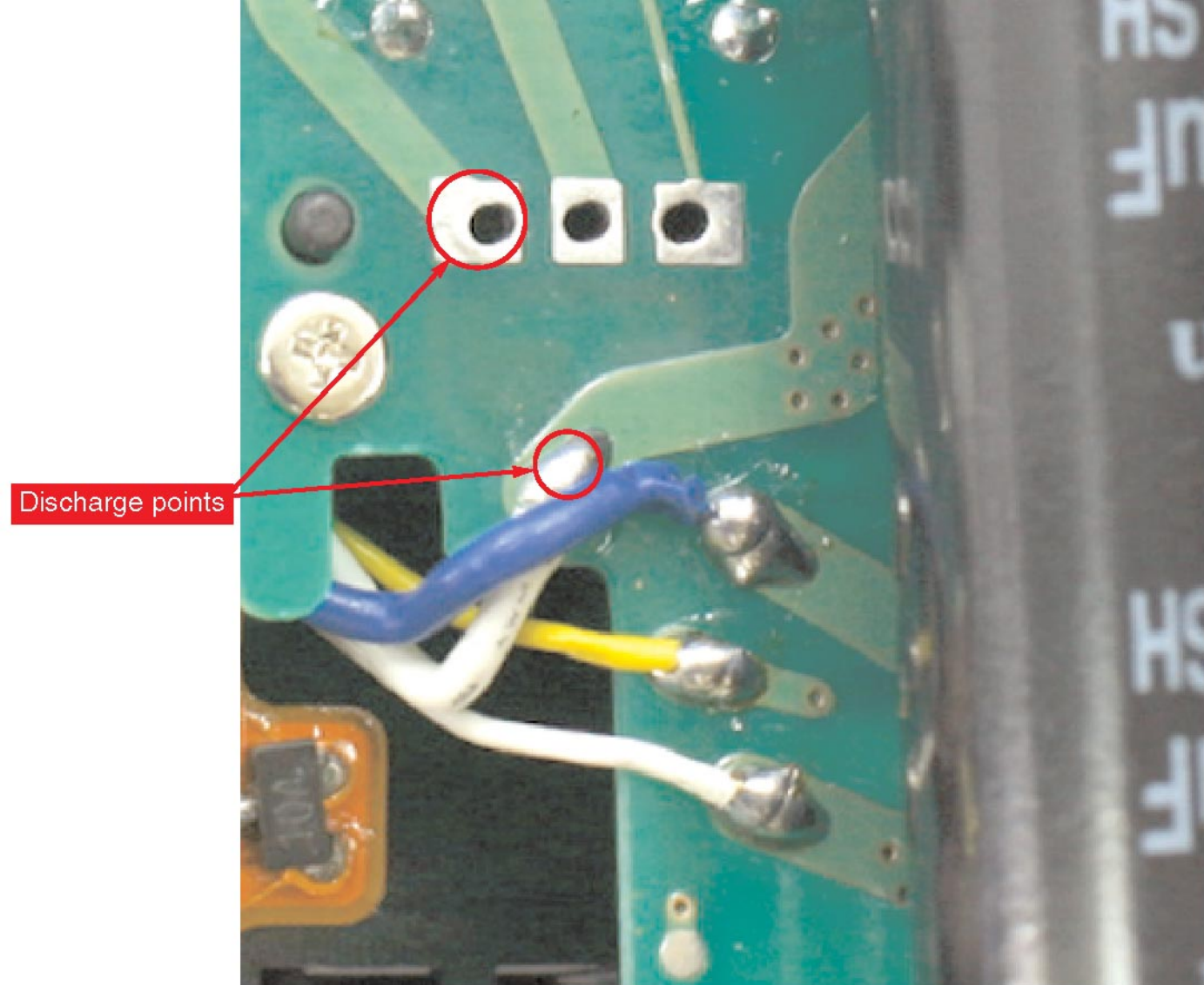
Insert a piece of the sticky sheet and remove the trigger spring to keep the flash popped up.

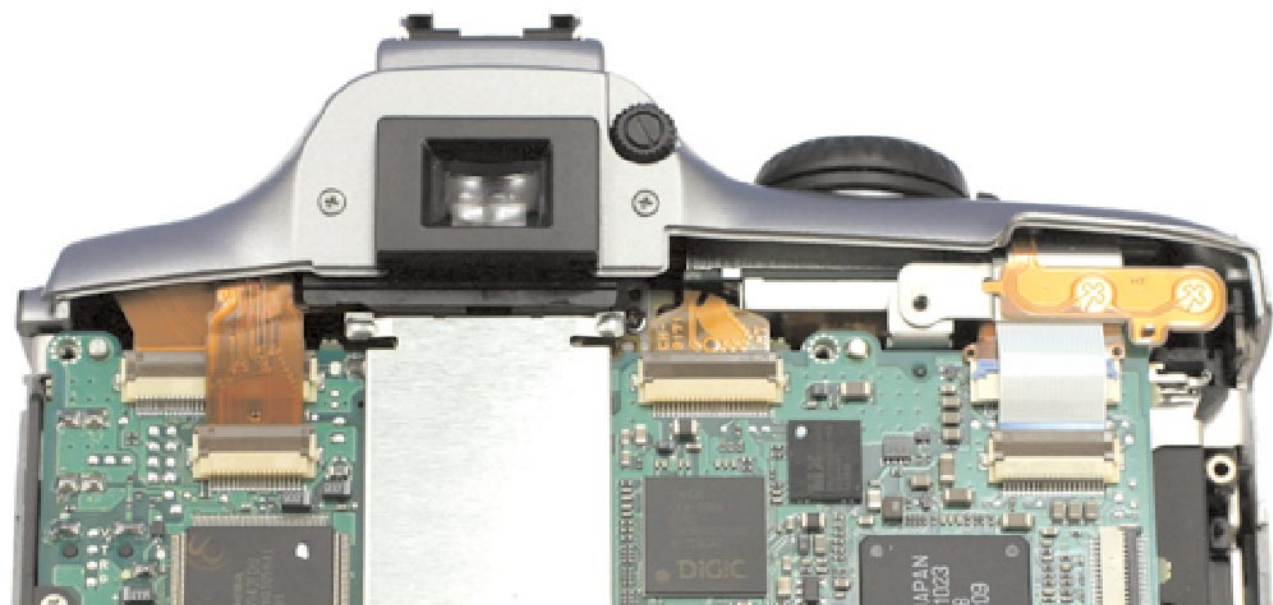


[← Back](#)

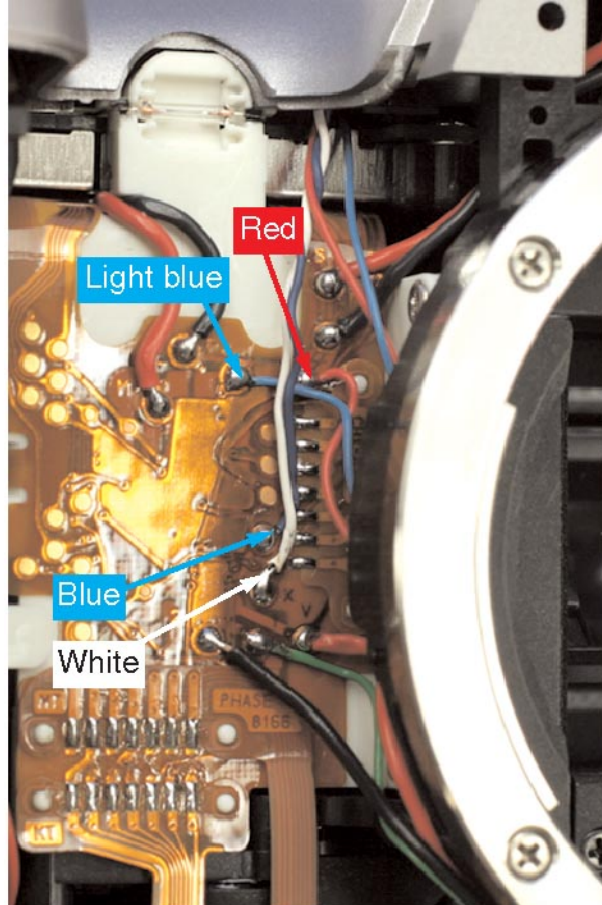


Release the tripod holes.

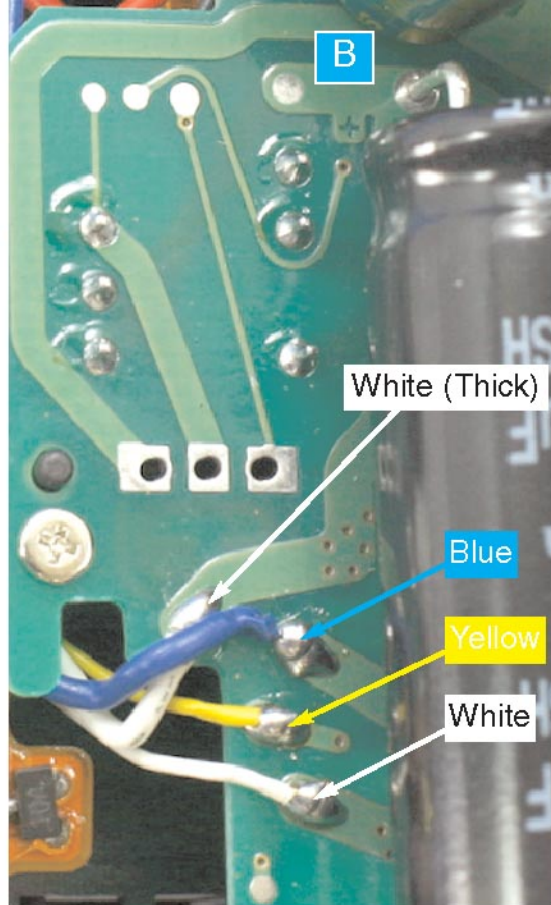




A



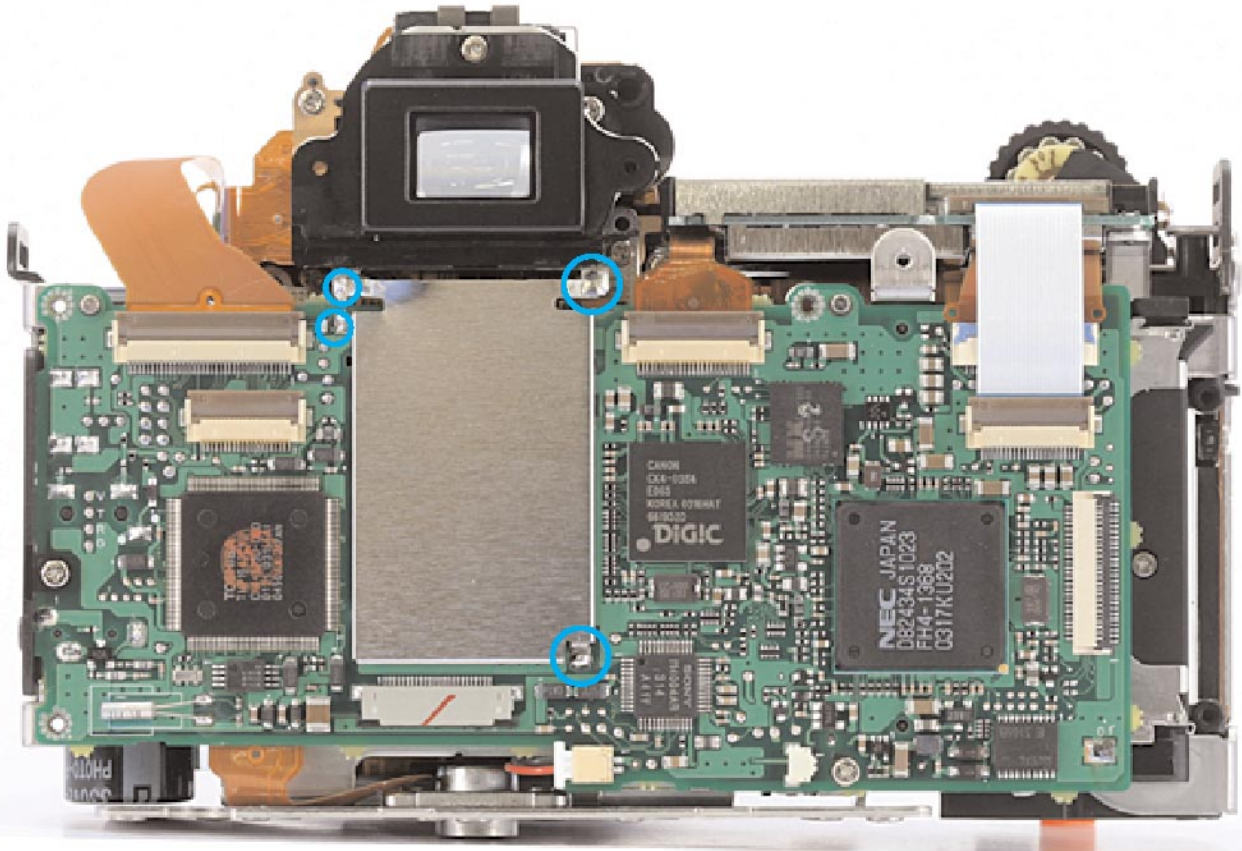
B



← Back

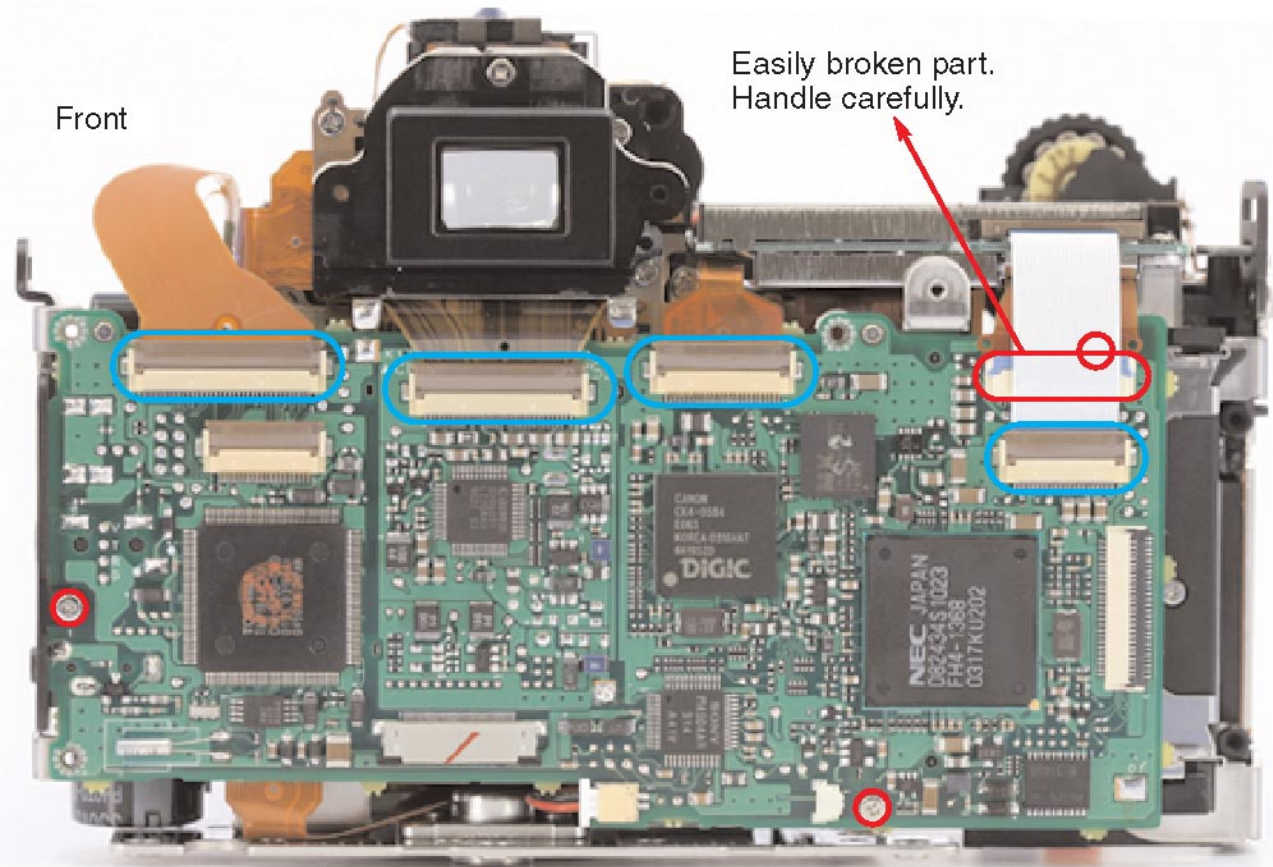
Cover the lead wires with an insulating tape.





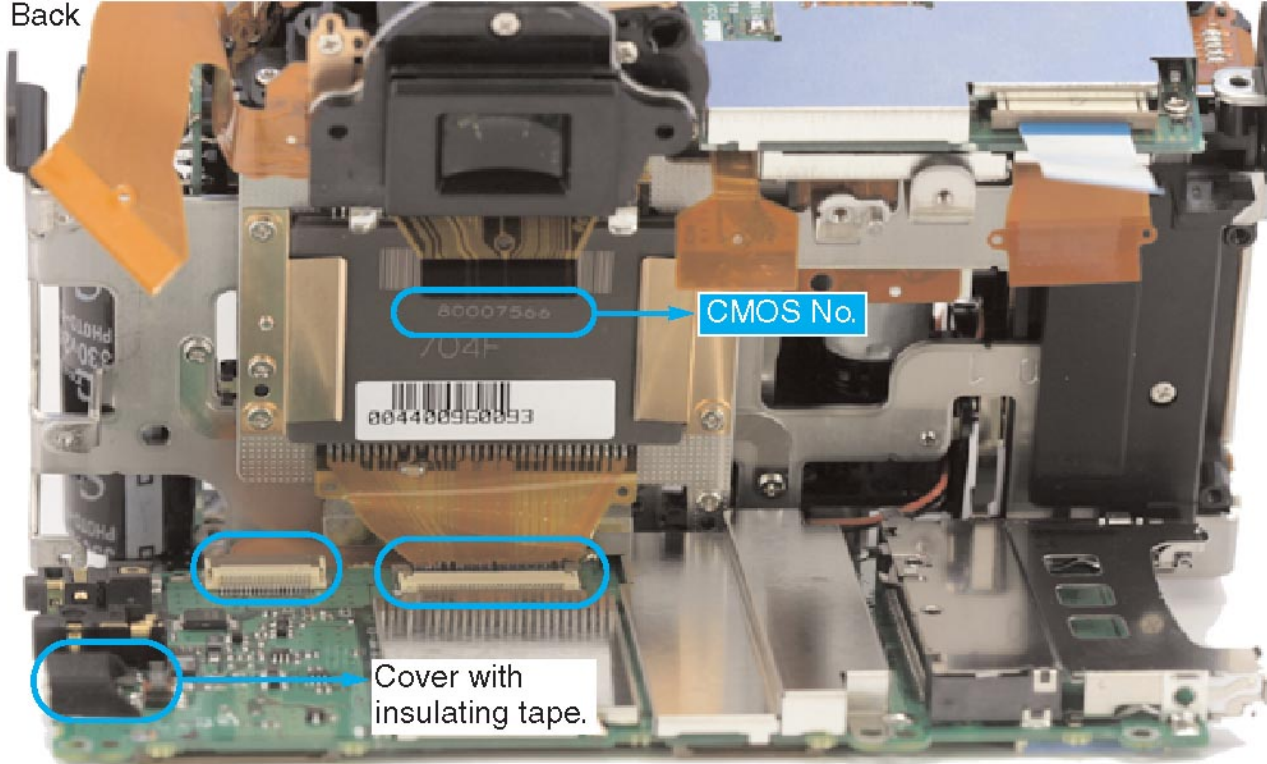
Front

Easily broken part.
Handle carefully.




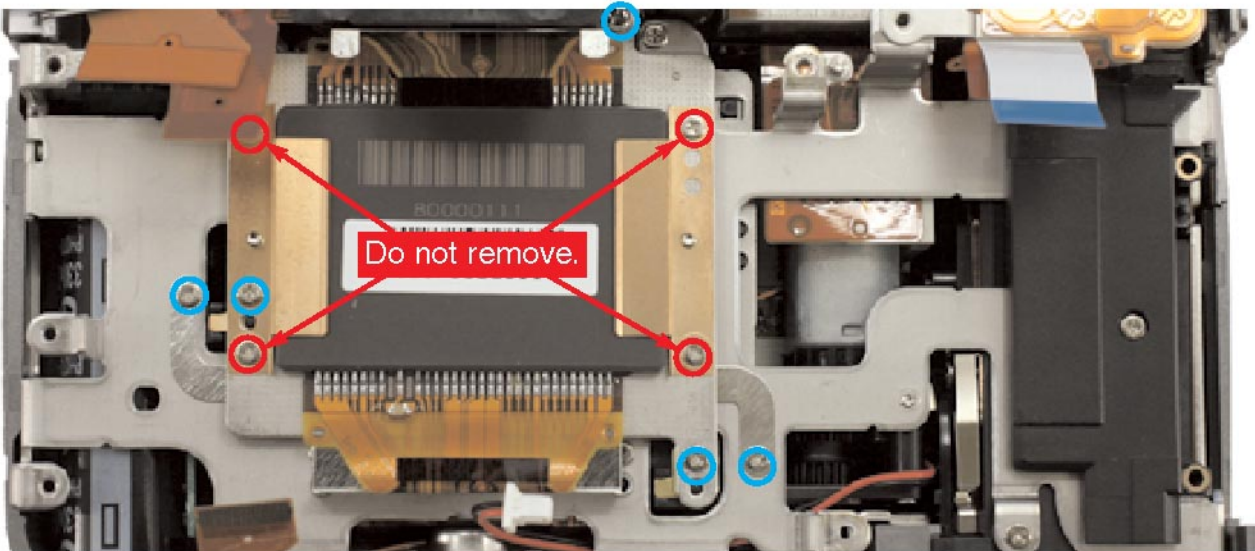
← Back

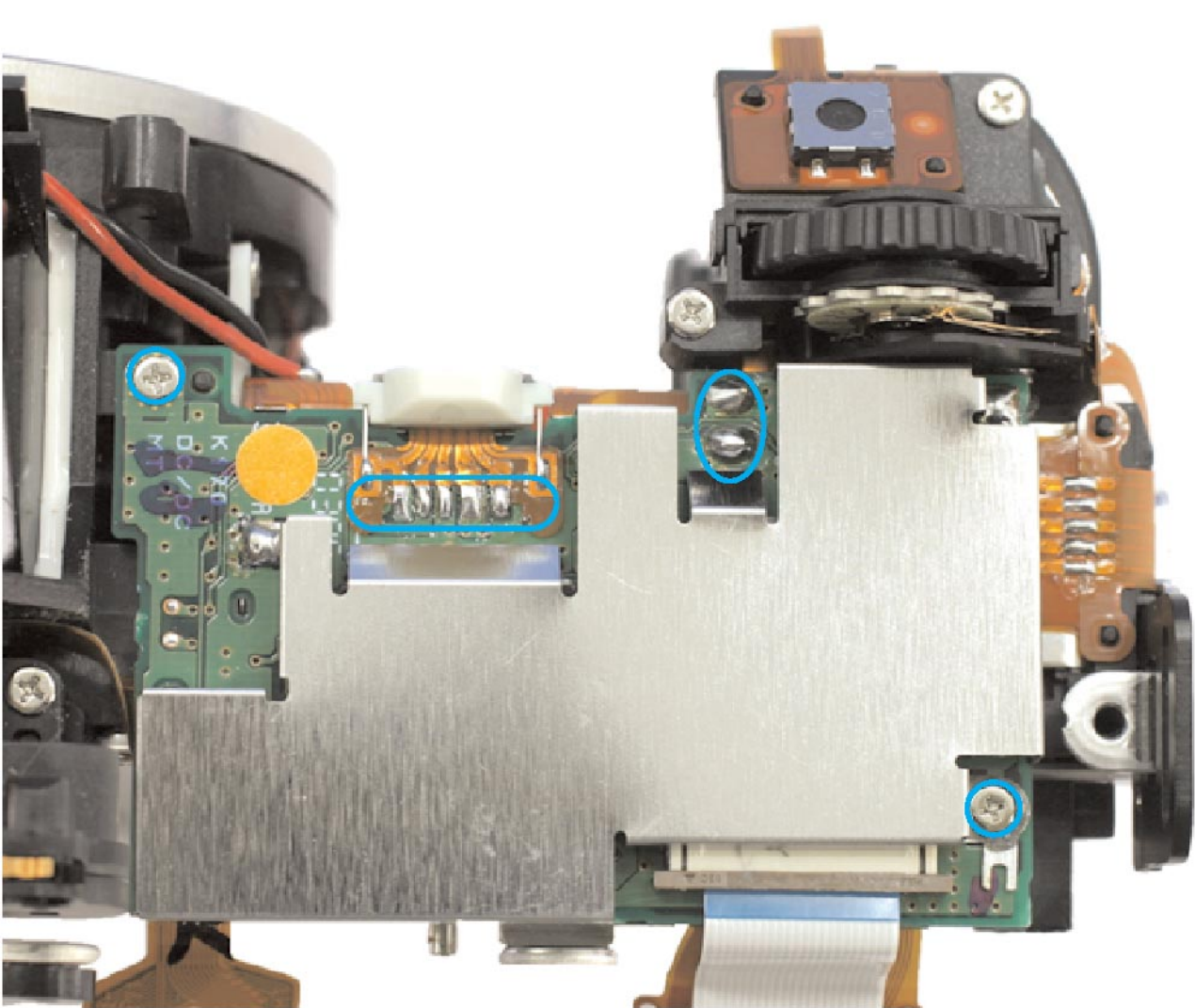
Back

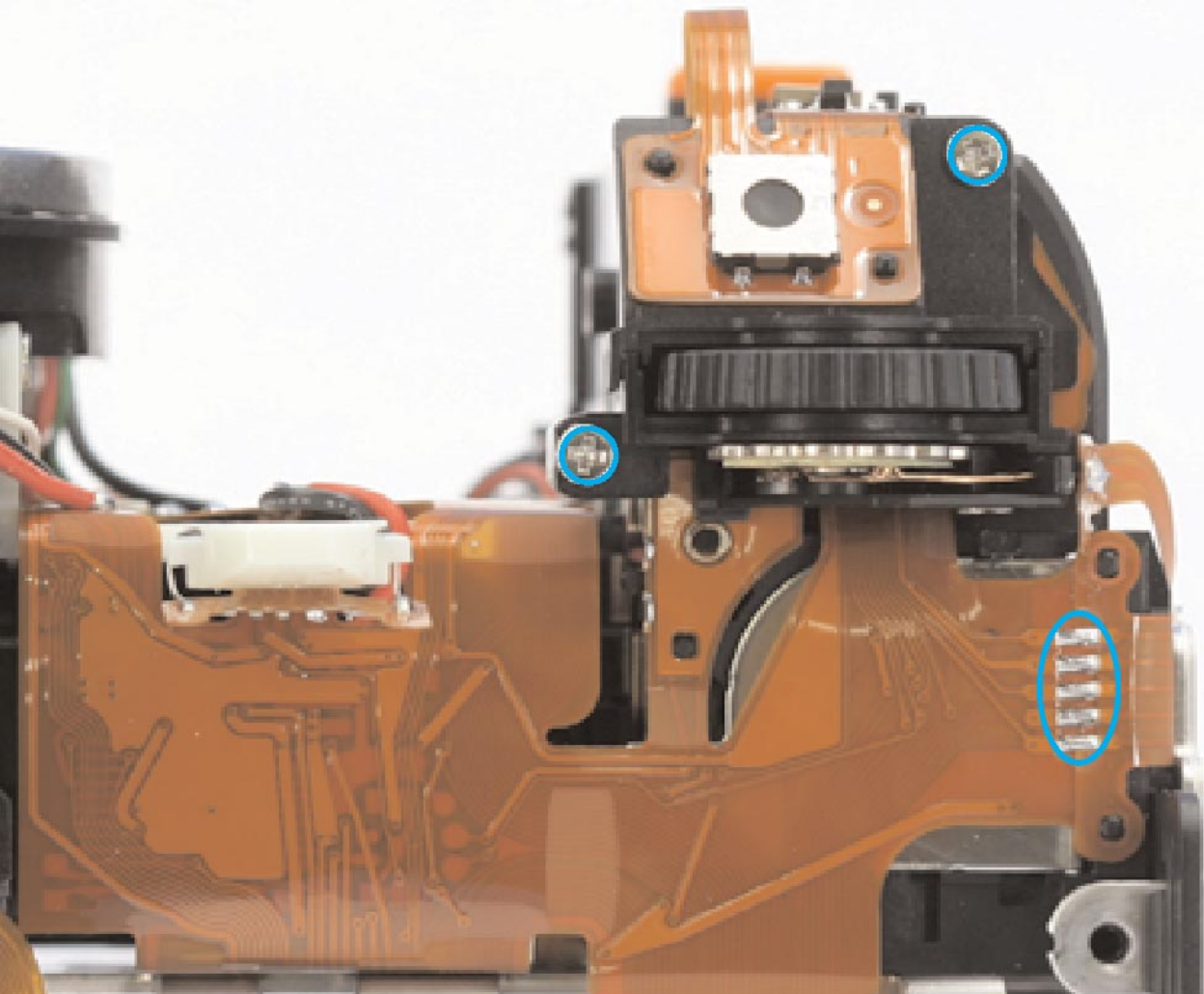


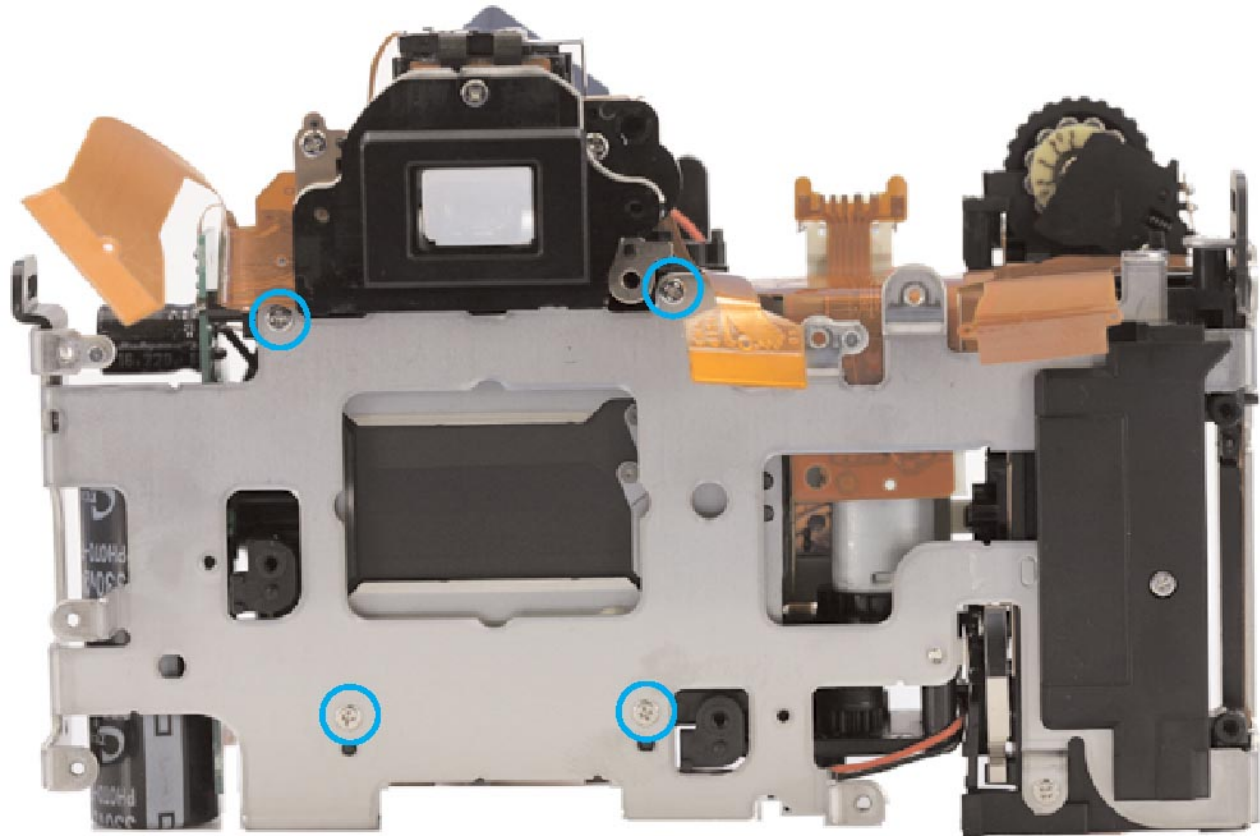
← Back

Screws circled with  are Adjusting Screws so that be sure not to loosen them. If by accident they are loosened, replace the CMOS ass'y.









Black

Red

Red

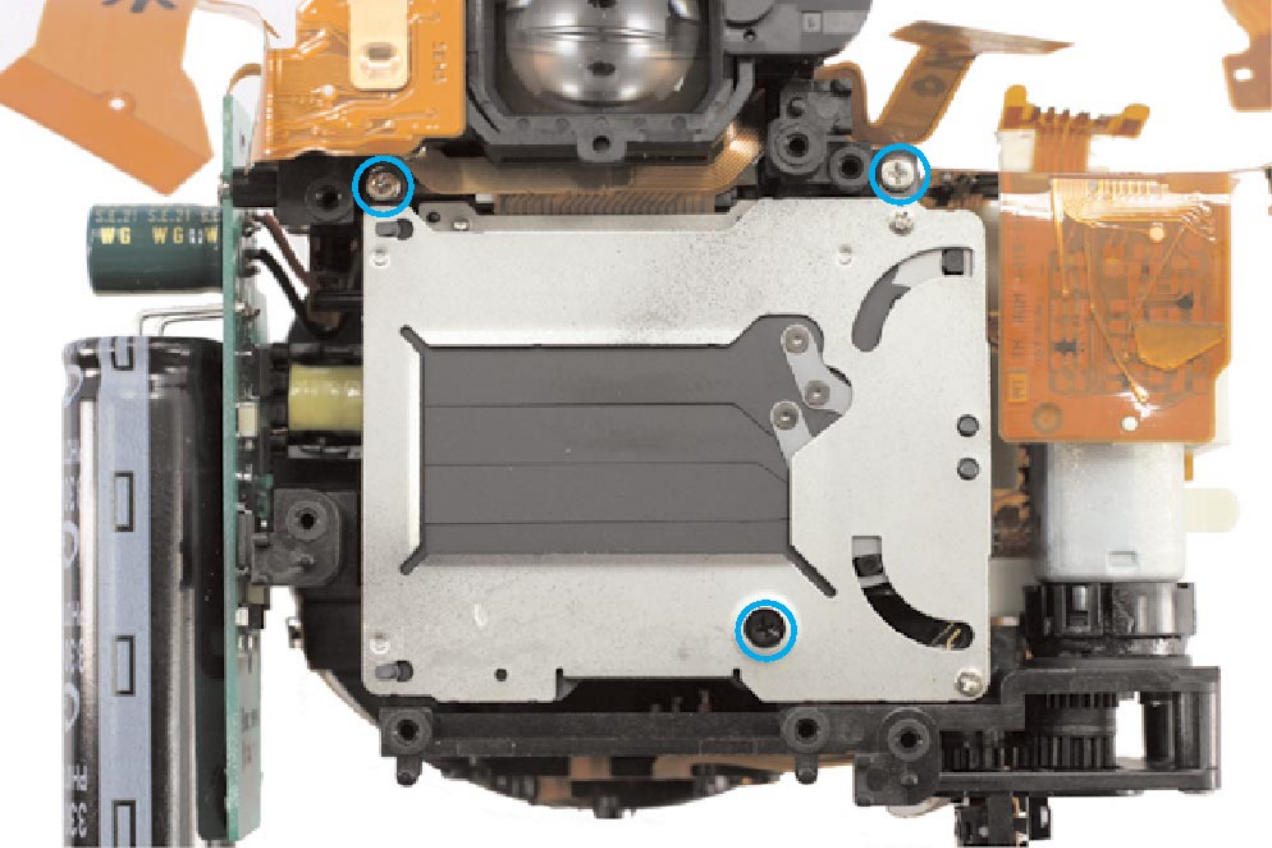
Black

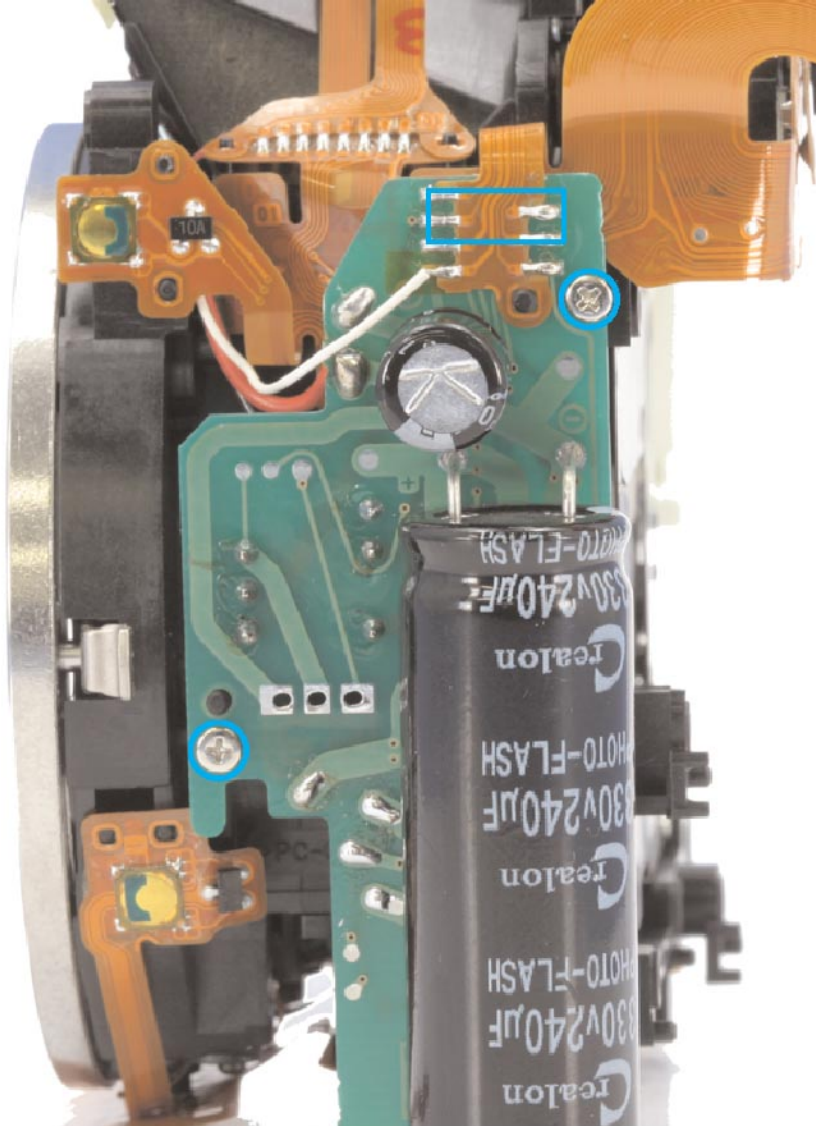
White

Black

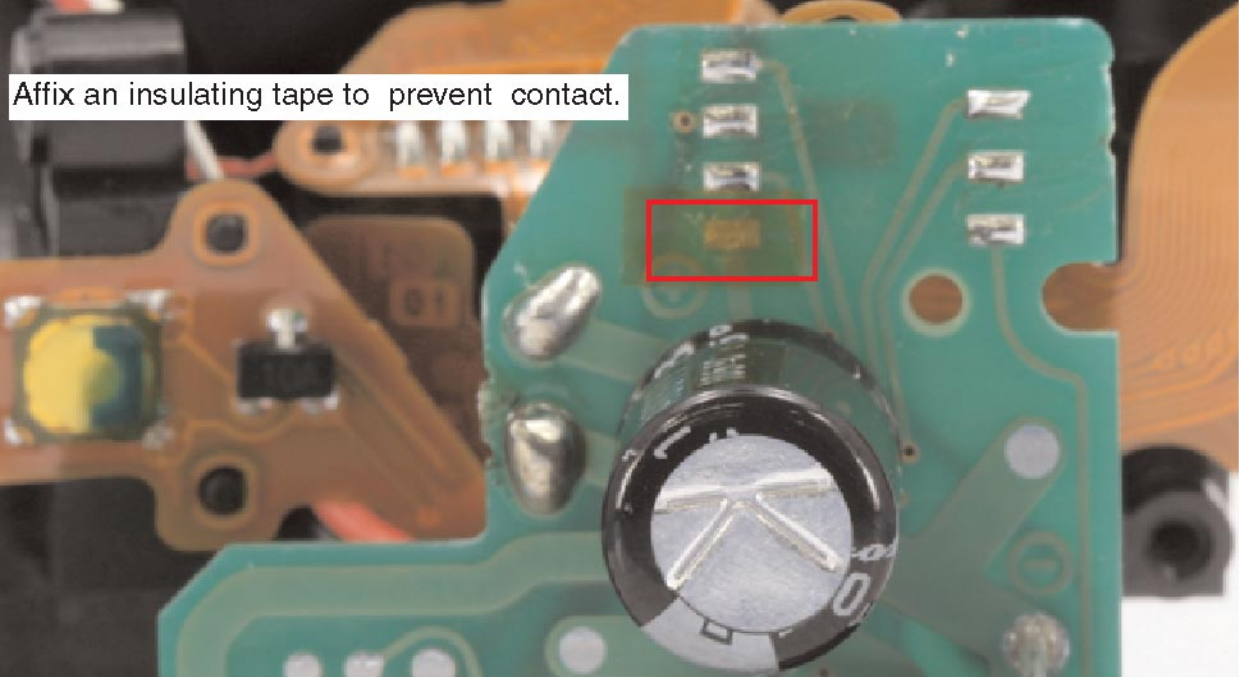
Green

Red

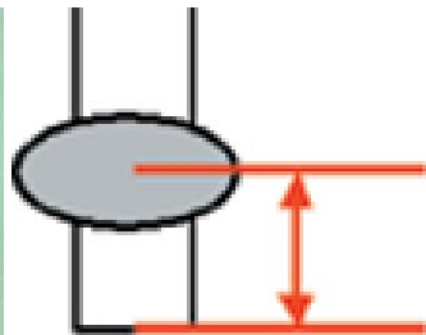
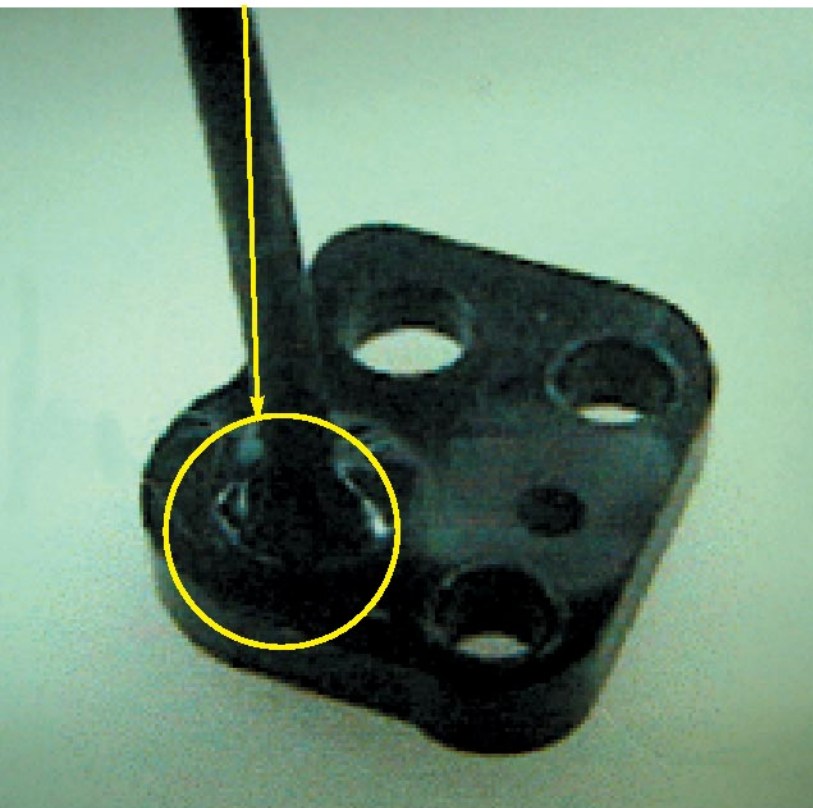




Affix an insulating tape to prevent contact.

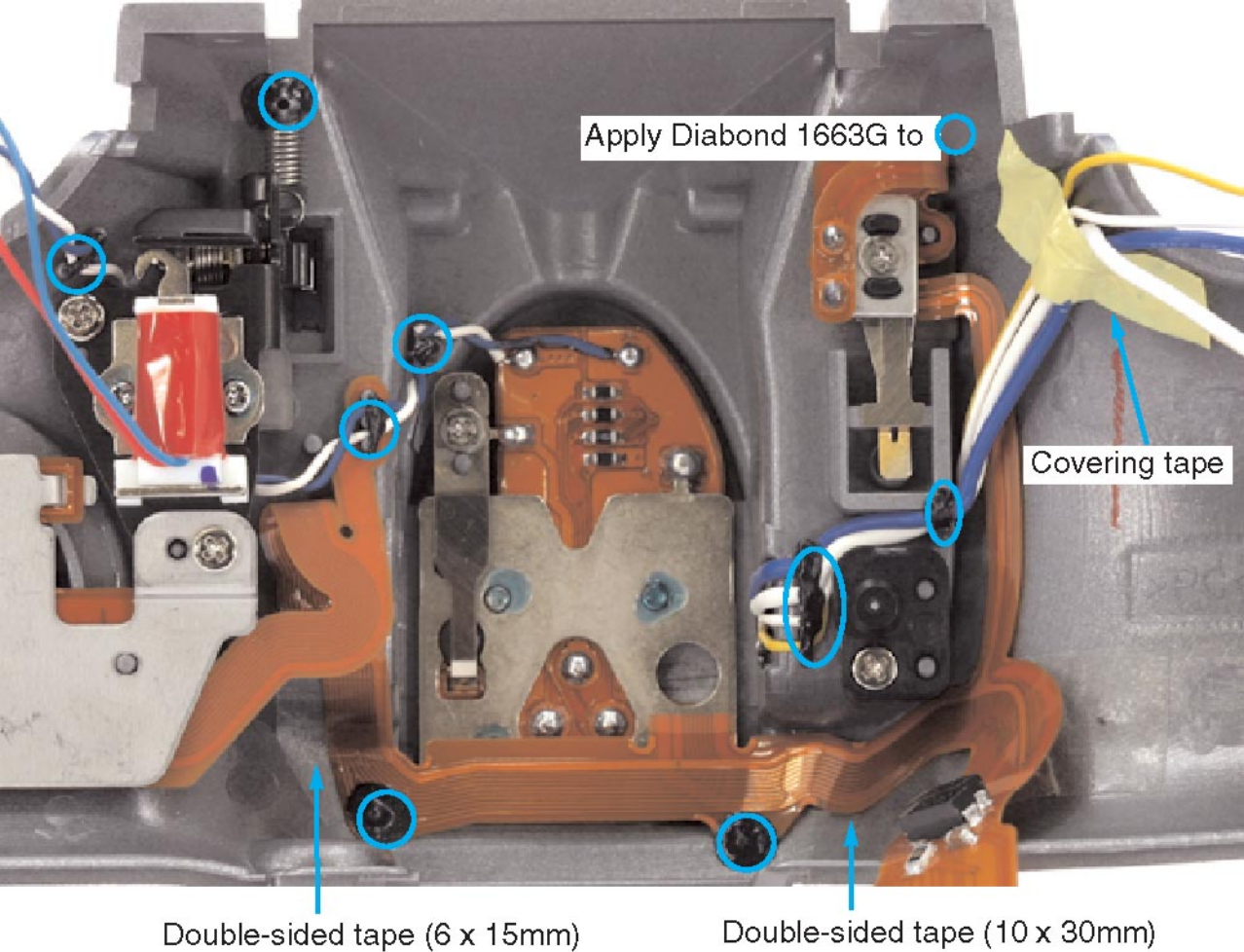


Apply Cemedine Super X



Apply in the area
20mm from the tip.

← Back



013101240115

Compensation amount

0.131mm

0.124mm

0.115mm

[1]

[2]

[3]

CMOS unit
Washer compensation
amount

80100688

704F

013101240115

These numbers indicate compensation amount of 3 positions respectively. The first digit "0" means increased compensation so that the amount of washer equivalent to the indication will be added. In case of the example 0.131mm washer compensation amount is to be added.

← Back

Fitting positions

[2]

[3]

[1]

← Back